

Product datasheet for **AM20477SU-N**

Cytokeratin 15 (KRT15) Mouse Monoclonal Antibody [Clone ID: 6E7]

Product data:

| | |
|-----------------------|---|
| Product Type: | Primary Antibodies |
| Clone Name: | 6E7 |
| Applications: | ELISA, FC, IF, IHC, WB |
| Recommended Dilution: | ELISA: 1/10000. Flow Cytometry: 1/200 - 1/400. Immunofluorescence: 1/200 - 1/1000. Immunohistochemistry on Paraffin Sections: 1/200. Western Blot: 1/500 - 1/2000. |
| Reactivity: | Human |
| Host: | Mouse |
| Isotype: | IgG2a |
| Clonality: | Monoclonal |
| Immunogen: | Recombinant fragment of KRT15 expressed in E. coli |
| Specificity: | Recognizes Cytokeratin-15 (KRT15). |
| Formulation: | State: Ascites State: Ascites fluid containing 0.03% Sodium Azide as preservative |
| Conjugation: | Unconjugated |
| Storage: | Store the antibody undiluted at 2-8°C for one month or (in aliquots) at -20°C for longer. Avoid repeated freezing and thawing. |
| Stability: | Shelf life: one year from despatch. |
| Gene Name: | keratin 15 |
| Database Link: | Entrez Gene 3866 Human P19012 |



[View online »](#)

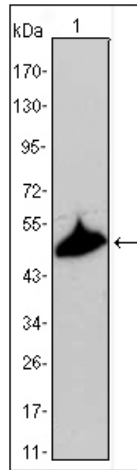
Background:

Keratin 15 is a type I keratin without a defined type II partner. Keratin 15 is expressed primarily in the basal keratinocytes of stratified tissues, including the fetal epidermis and fetal nail. Expression of keratin 15 is downregulated in some hyperproliferating situations, such as psoriasis and hypertrophic scars. Because keratinocytes in psoriasis and hypertrophic scars are activated, it is suggested that keratin 15 expression is not compatible with keratinocyte activation and the keratin 15 gene is downregulated to maintain the activated phenotype.

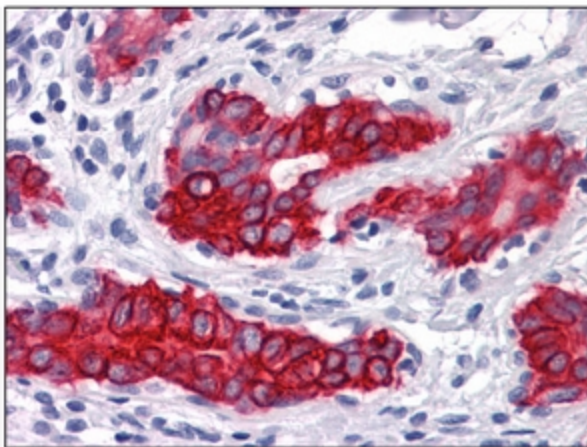
Synonyms:

Cytokeratin-15, CK-15, K15, Keratin-15, Keratin 15, KRTB, KRT15

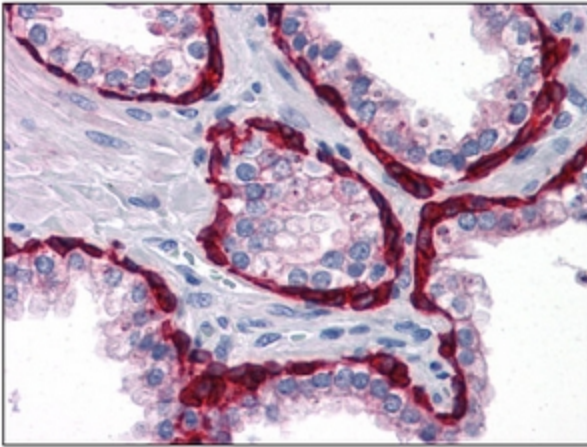
Product images:



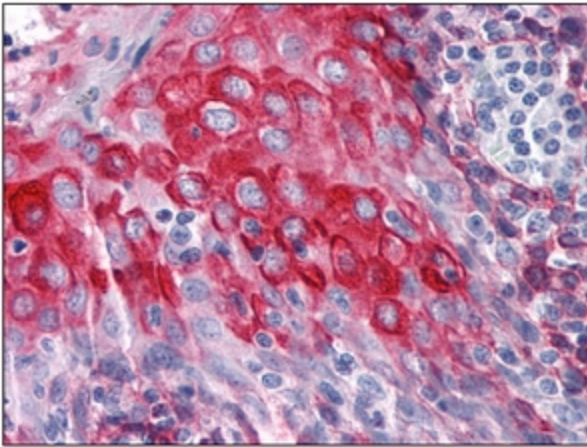
Western blot analysis using anti-KRT15 mAb against A431 cell lysate.



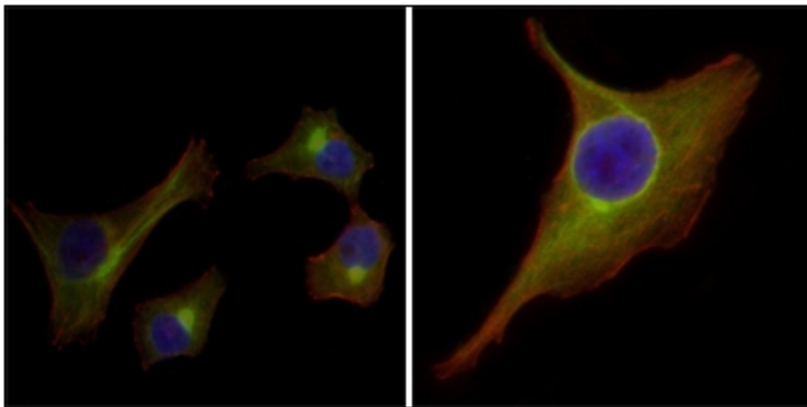
Human Breast: Formalin-Fixed, Paraffin-Embedded (FFPE)



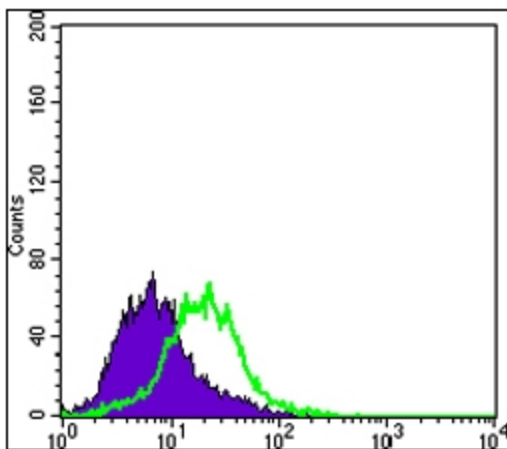
Human Prostate: Formalin-Fixed, Paraffin-Embedded (FFPE)



Human Tonsil: Formalin-Fixed, Paraffin-Embedded (FFPE)



Immunofluorescence analysis of HepG2 (left) and PACN-1 (right) cells using anti-KRT15 mAb (green). Red: Actin filaments have been labeled with DY-554 phalloidin. Blue: DRAQ5 fluorescent DNA dye.



Flow cytometric analysis of PACN-1 cells using Monoclonal anti-KRT15 antibody (green) and negative control (purple).