

## Product datasheet for **AM20476PU-N**

### alpha 1 Fetoprotein (AFP) Mouse Monoclonal Antibody [Clone ID: 6E6]

#### Product data:

Product Type:	Primary Antibodies
Clone Name:	6E6
Applications:	ELISA, IHC, WB
Recommended Dilution:	<b>ELISA:</b> 1/10000. <b>Immunohistochemistry on Paraffin Sections:</b> 1/200 - 1/400. <b>Western Blot:</b> 1/500 - 1/2000.
Reactivity:	Human
Host:	Mouse
Isotype:	IgG2b
Clonality:	Monoclonal
Immunogen:	Recombinant fragment of Human AFP.
Specificity:	Recognizes Alpha-Fetoprotein (AFP)
Formulation:	PBS containing 50% Glycerol and 0.03% Sodium Azide State: Purified State: Liquid purified IgG fraction
Purification:	Protein G Chromatography
Conjugation:	Unconjugated
Storage:	Store the antibody undiluted at 2-8°C for one month or (in aliquots) at -20°C for longer. Avoid repeated freezing and thawing.
Stability:	Shelf life: one year from despatch.
Gene Name:	alpha fetoprotein
Database Link:	<a href="#">Entrez Gene 174 Human P02771</a>



[View online »](#)

**Background:**

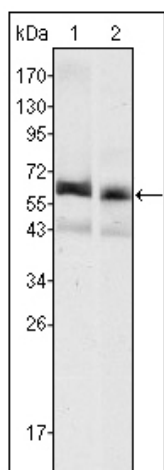
Alpha Fetoprotein is a major plasma protein produced by the yolk sac and the liver during fetal life. alpha Fetoprotein expression in adults is often associated with hepatoma or teratoma. However, hereditary persistence of alpha Fetoprotein may also be found in individuals with no obvious pathology. The protein is thought to be the fetal counterpart of serum albumin, and the alpha Fetoprotein and albumin genes are present in tandem in the same transcriptional orientation on chromosome 4. alpha Fetoprotein is found in monomeric as well as dimeric and trimeric forms, and binds copper, nickel, fatty acids and bilirubin. The level of alpha Fetoprotein in amniotic fluid is used to measure renal loss of protein to screen for spina bifida and anencephaly.

**Synonyms:**

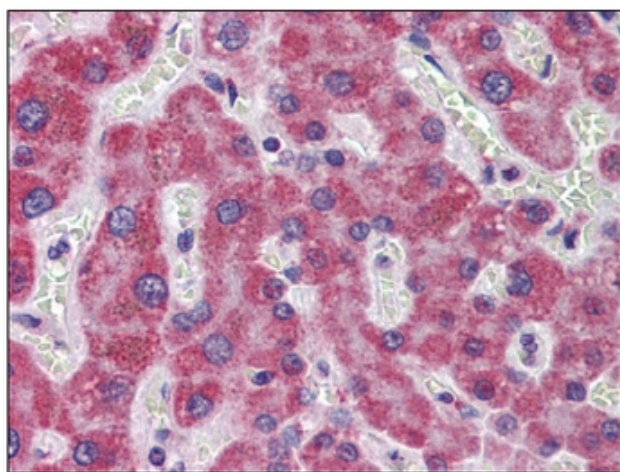
Alpha-1-fetoprotein, Alpha-fetoglobulin, HPAFP

**Protein Families:**

Druggable Genome, Secreted Protein

**Product images:**

Western blot analysis using anti-AFP mAb against HepG2 (Lane 1) and SMMC-7721 (Lane 2) cell lysate.



Liver Human: Formalin-Fixed, Paraffin-Embedded (FFPE)