

Product datasheet for **AM20468SU-N**

Eph receptor B4 (EPHB4) (Extracell. Dom.) Mouse Monoclonal Antibody [Clone ID: 5B5]

Product data:

Product Type:	Primary Antibodies
Clone Name:	5B5
Applications:	ELISA, IF, IHC, WB
Recommended Dilution:	ELISA: 1/10000. Immunofluorescence: 1/200 - 1/1000. Immunohistochemistry on Paraffin Sections: 1/200. Western Blot: 1/500 - 1/2000.
Reactivity:	Human
Host:	Mouse
Isotype:	IgG1
Clonality:	Monoclonal
Immunogen:	Purified recombinant extracellular fragment of Human EphB4 fused with hIgGFc tag expressed in HEK293 cell line.
Specificity:	Recognizes extracellular domain of Ephrin Type B Receptor 4 (EPHB4).
Formulation:	State: Ascites State: Ascites fluid containing 0.03% Sodium Azide as preservative
Conjugation:	Unconjugated
Storage:	Store the antibody undiluted at 2-8°C for one month or (in aliquots) at -20°C for longer. Avoid repeated freezing and thawing.
Stability:	Shelf life: one year from despatch.
Gene Name:	EPH receptor B4
Database Link:	Entrez Gene 2050 Human P54760



[View online »](#)

Background:

EPH receptor B4 (EphB4), also known as Htk, Myk1, Tyro11 is a member of the Eph receptor family, which bind the ephrin ligand family. Based on their structures and sequence relationships, ephrins are divided into the ephrin-A (EFNA) class, which are anchored to the membrane by a glycosylphosphatidylinositol linkage, and the ephrin-B (EFNB) class, which are transmembrane proteins. Ephrin receptors make up the largest subgroup of the receptor tyrosine kinase (RTK) family. The EphB4 protein binds to ephrin-B2 and plays an essential role in vascular development.

Synonyms:

Ephrin type-B receptor 4, HTK, TYRO11

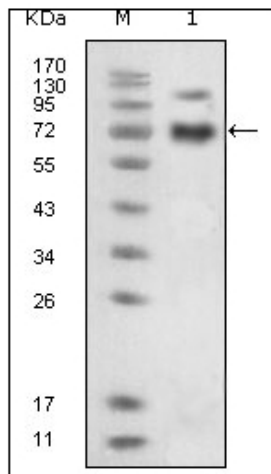
Protein Families:

Druggable Genome, Protein Kinase, Transmembrane

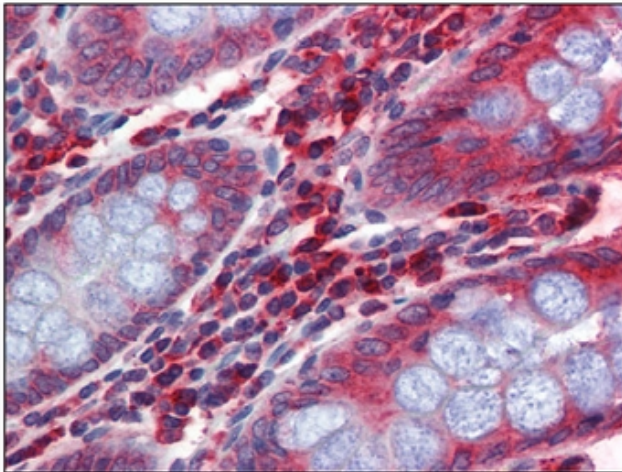
Protein Pathways:

Axon guidance

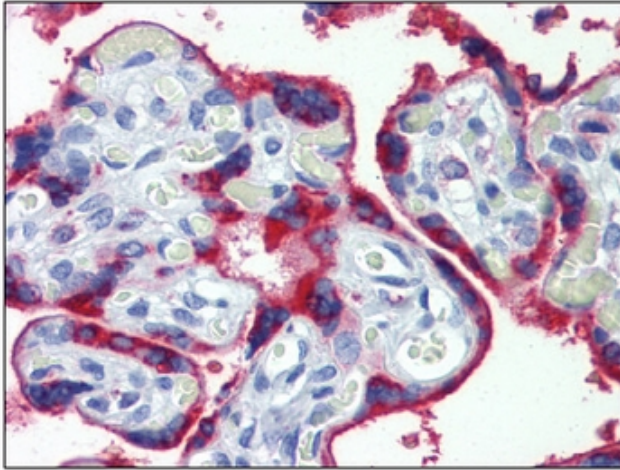
Product images:



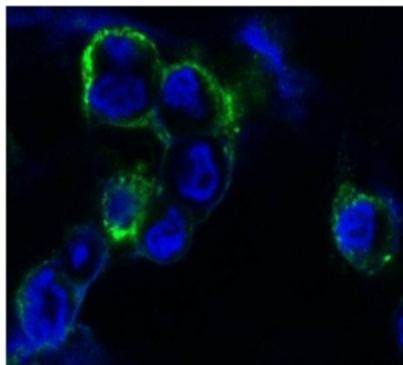
Western blot analysis using anti-EphB4 monoclonal antibody against extracellular domain of human EphB4 (aa16-539).



Colon, Human: Formalin-Fixed, Paraffin-Embedded (FFPE)



Placenta, Human: Formalin-Fixed, Paraffin-Embedded (FFPE)



Confocal Immunofluorescence analysis of methanol-fixed HEK293 cells transfected with EphB4-hlgGfc using anti-EphB4 monoclonal antibody (green), showing membrane localization. Blue: DRAQ5 fluorescent DNA dye.