

Product datasheet for **AM20466PU-N**

CD1 (CD1D) Mouse Monoclonal Antibody [Clone ID: 51.1]

Product data:

Product Type:	Primary Antibodies
Clone Name:	51.1
Applications:	FC, IHC
Recommended Dilution:	Flow Cytometry. Immunohistochemistry on Frozen Sections. Immunohistochemistry on Paraffin Sections: 20 µg/ml.
Reactivity:	Human
Host:	Mouse
Isotype:	IgG2b
Clonality:	Monoclonal
Immunogen:	Human CD1d
Specificity:	The monoclonal antibody reacts with Human CD1d.
Formulation:	PBS, pH 7.2 containing < / = 0.09% Sodium Azide as preservative State: Aff - Purified State: Liquid purified IgG fraction
Concentration:	lot specific
Purification:	Affinity Chromatography
Conjugation:	Unconjugated
Storage:	Store the antibody at 2-8°C. Avoid repeated freezing and thawing.
Stability:	Shelf life: one year from despatch.
Gene Name:	CD1d molecule
Database Link:	Entrez Gene 912 Human P15813



[View online »](#)

Background:

Human CD1d, a member of the CD1 family with similarity to the non-polymorphic MHC Class I-like molecules. CD1d is a highly conserved single transmembrane receptor of the Immunoglobulin Superfamily. CD1d can associate with beta-microglobulin another feature showing similarity to MHC class I molecules, but can also exist as a nonglycosylated protein not in association with beta microglobulin. This suggests different control mechanisms for presenting glycolipid containing molecules to CD1d reactive NKT cells. Expression of CD1d is found on B cells of the periphery, in resting monocytes and cortical thymocytes. On intestinal epithelial cells (IEC) expression is polarized. Expression can also be found at low levels intracellularly in hepatocytes. In HCV (hepatitis C virus) livers, CD1d is highly expressed compared to normal controls.

Synonyms:

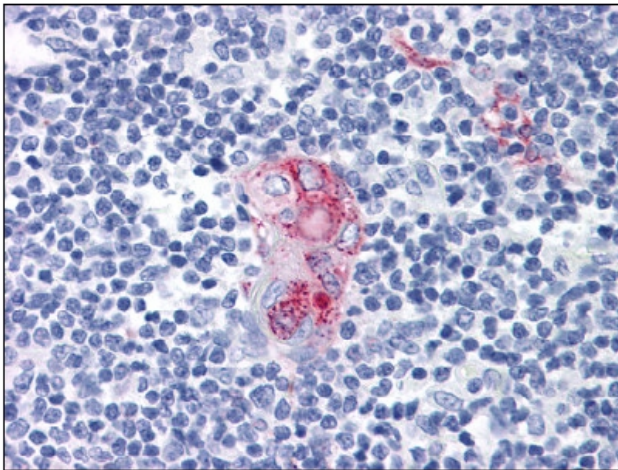
R3G1

Protein Families:

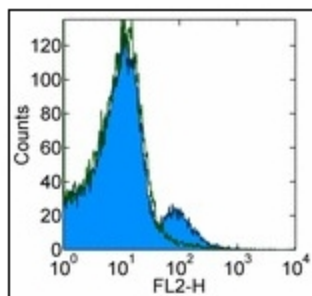
Druggable Genome, Transmembrane

Protein Pathways:

Hematopoietic cell lineage

Product images:

Human Thymus: Formalin-Fixed, Paraffin-Embedded (FFPE)



Staining of normal human peripheral blood cells with 0.5 ug of Purified Mouse IgG2b isotype control (open histogram) or Purified anti-human CD1d (51.1) (colored histogram) followed by Biotin Anti-Mouse IgG and Streptavidin-PE. Cells in the lymphocyte gate were used for analysis.