

Product datasheet for **AM20464SU-N**

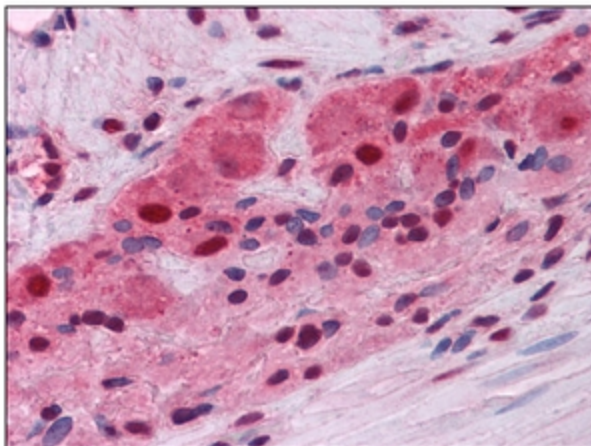
PWWP3A Mouse Monoclonal Antibody [Clone ID: 4G10]

Product data:

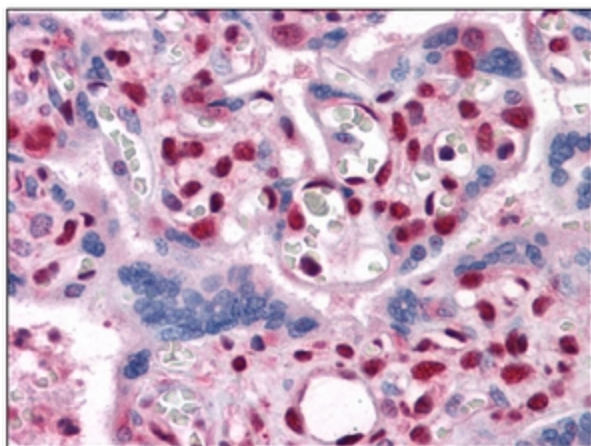
Product Type:	Primary Antibodies
Clone Name:	4G10
Applications:	ELISA, IHC, WB
Recommended Dilution:	ELISA. Immunohistochemistry on Paraffin Sections: 1/200. Western Blot: 1/500 - 1/2000.
Reactivity:	Human
Host:	Mouse
Isotype:	IgG1
Clonality:	Monoclonal
Immunogen:	Recombinant MUM1 protein
Specificity:	Recognizes Melanoma Associated Antigen mutated 1 (MUM1).
Formulation:	State: Ascites State: Ascites fluid containing 0.03% Sodium Azide as preservative
Conjugation:	Unconjugated
Storage:	Store the antibody undiluted at 2-8°C for one month or (in aliquots) at -20°C for longer. Avoid repeated freezing and thawing.
Stability:	Shelf life: one year from despatch.
Gene Name:	melanoma associated antigen (mutated) 1
Database Link:	Entrez Gene 84939 Human Q2TAK8
Synonyms:	EXPAND1, MUM-1, Protein expandere



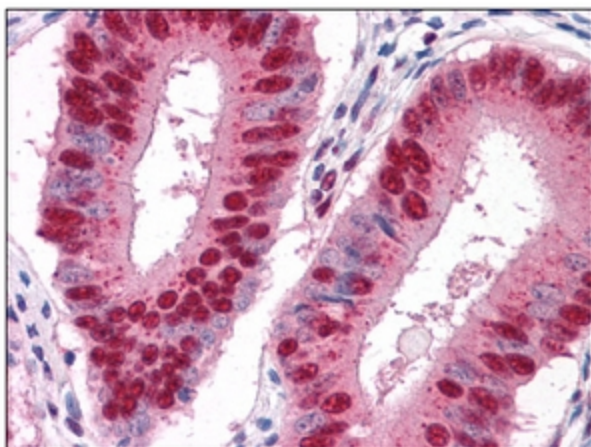
[View online »](#)

Product images:

Human Small Intestine, myenteric plexus:
Formalin-Fixed, Paraffin-Embedded (FFPE)



Human Placenta: Formalin-Fixed, Paraffin-Embedded (FFPE)



Human Uterus: Formalin-Fixed, Paraffin-Embedded (FFPE)