

Product datasheet for **AM20457SU-N**

NM23A (NME1) Mouse Monoclonal Antibody [Clone ID: 4B2]

Product data:

Product Type:	Primary Antibodies
Clone Name:	4B2
Applications:	ELISA, IF, IHC, WB
Recommended Dilution:	ELISA. Immunofluorescence: 1/200 - 1/1000. Immunohistochemistry on Paraffin Sections: 1/200. Western Blot: 1/500 - 1/2000.
Reactivity:	Human
Host:	Mouse
Isotype:	IgG1
Clonality:	Monoclonal
Immunogen:	Recombinant Human NME1 protein.
Specificity:	Recognizes Non-metastatic Cells 1 (NM23A/NME1).
Formulation:	State: Ascites State: Ascites fluid containing 0.03% Sodium Azide as preservative
Conjugation:	Unconjugated
Storage:	Store the antibody undiluted at 2-8°C for one month or (in aliquots) at -20°C for longer. Avoid repeated freezing and thawing.
Stability:	Shelf life: one year from despatch.
Gene Name:	NME/NM23 nucleoside diphosphate kinase 1
Database Link:	Entrez Gene 4830 Human P15531
Background:	Nucleoside diphosphate kinase A, also called NME1 (Non-metastatic cells 1), is expressed in different tumor types where their levels have been alternatively associated with reduced or increased metastatic potential. Reductions in NME1 expression have been significantly associated with aggressive behavior in melanoma, breast, colon, and gastric carcinomas. On the contrary, high levels of NME1 gene expression are noted in the advanced stage of thyroid carcinomas.



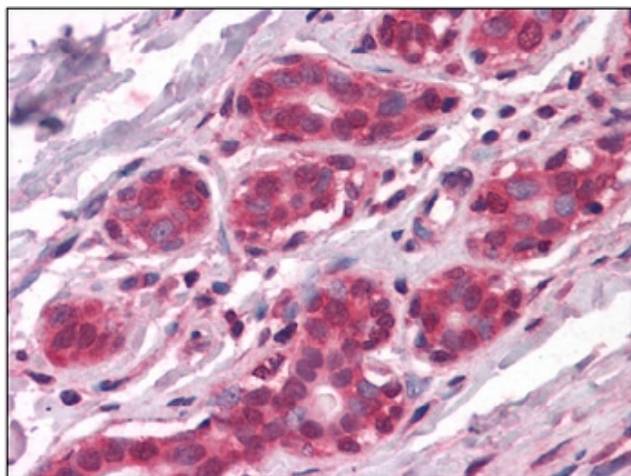
[View online »](#)

Synonyms: NME1, NDPKA, NM23, nm23-H1, GAAD

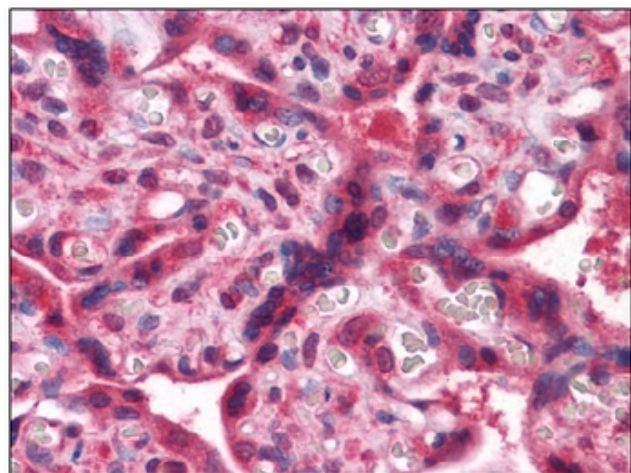
Protein Families: Druggable Genome, Stem cell - Pluripotency

Protein Pathways: Metabolic pathways, Purine metabolism, Pyrimidine metabolism

Product images:



Human Breast: Formalin-Fixed, Paraffin-Embedded (FFPE)



Human Placenta: Formalin-Fixed, Paraffin-Embedded (FFPE)