

Product datasheet for **AM20453SU-N**

Calnexin (CANX) Mouse Monoclonal Antibody [Clone ID: 3H4A7]

Product data:

Product Type:	Primary Antibodies
Clone Name:	3H4A7
Applications:	ELISA, IF, IHC, WB
Recommended Dilution:	ELISA: 1/10000. Immunofluorescence: 1/200 - 1/1000. Immunohistochemistry on Paraffin Sections: 1/200 - 1/400. Western Blot: 1/500 - 1/2000.
Reactivity:	Human, Bovine, Equine, Hamster, Monkey, Mouse, Porcine, Rabbit, Rat
Host:	Mouse
Isotype:	IgG2b
Clonality:	Monoclonal
Immunogen:	Synthetic peptide - KLH conjugated - of Human Calnexin
Specificity:	Recognizes Calnexin (CANX).
Formulation:	State: Ascites State: Ascites fluid containing 0.03% Sodium Azide as preservative
Conjugation:	Unconjugated
Storage:	Store the antibody undiluted at 2-8°C for one month or (in aliquots) at -20°C for longer. Avoid repeated freezing and thawing.
Stability:	Shelf life: one year from despatch.
Gene Name:	calnexin
Database Link:	Entrez Gene 12330 Mouse Entrez Gene 29144 Rat Entrez Gene 704794 Monkey Entrez Gene 821 Human P27824



[View online »](#)

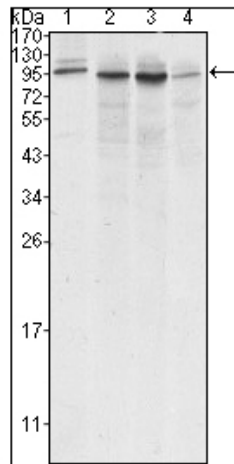
Background: This gene encodes a member of the calnexin family of molecular chaperones. The encoded protein is a calcium-binding, endoplasmic reticulum (ER)-associated protein that interacts transiently with newly synthesized N-linked glycoproteins, facilitating protein folding and assembly. It may also play a central role in the quality control of protein folding by retaining incorrectly folded protein subunits within the ER for degradation. Alternatively spliced transcript variants encoding the same protein have been described.

Synonyms: IP90, p90, CANX, ER Marker

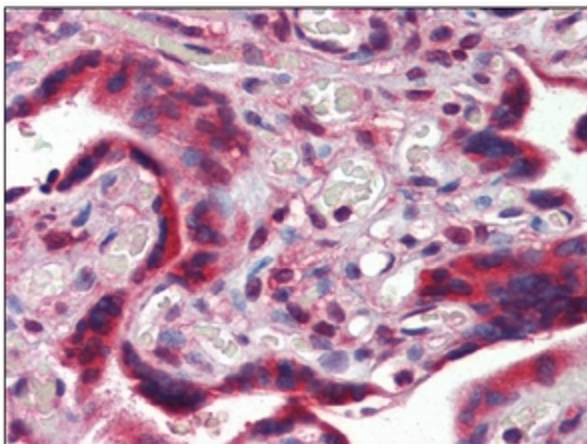
Protein Families: Druggable Genome, Transmembrane

Protein Pathways: Antigen processing and presentation

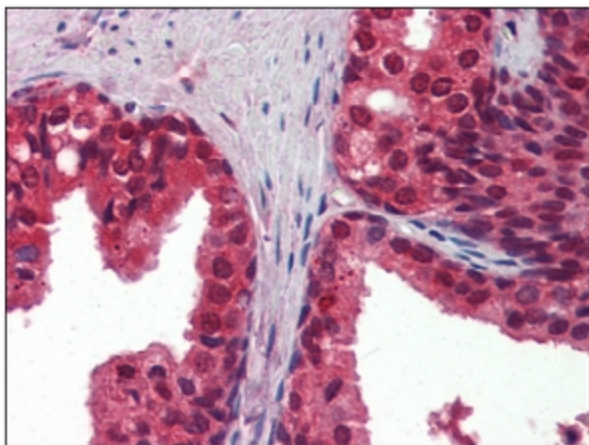
Product images:



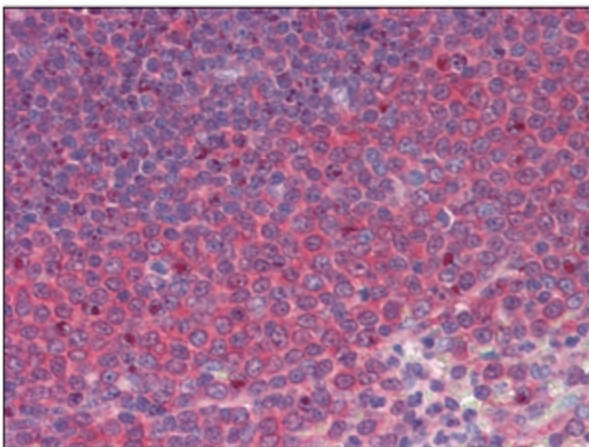
Western blot analysis using Monoclonal anti-Calnexin antibody against A431 (Lane 1), Hela (Lane 2), MCF-7 (Lane 3) and A549 (Lane 4) cell lysate.



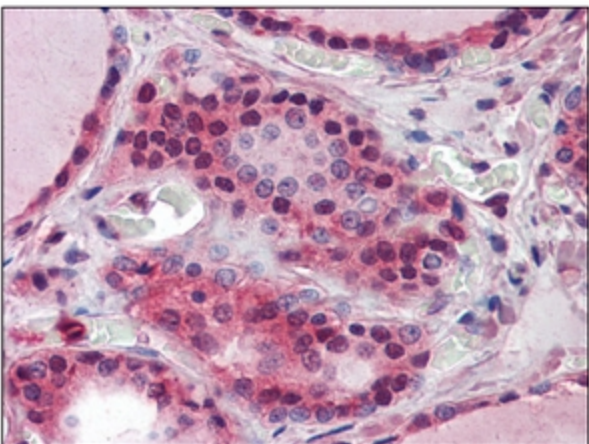
Placenta, Human: Formalin-Fixed, Paraffin-Embedded (FFPE)



Prostate, Human: Formalin-Fixed, Paraffin-Embedded (FFPE)



Spleen, Human: Formalin-Fixed, Paraffin-Embedded (FFPE)



Thyroid, Human: Formalin-Fixed, Paraffin-Embedded (FFPE)