

Product datasheet for **AM20451SU-N**

CD166 (ALCAM) Mouse Monoclonal Antibody [Clone ID: 3F8B12]

Product data:

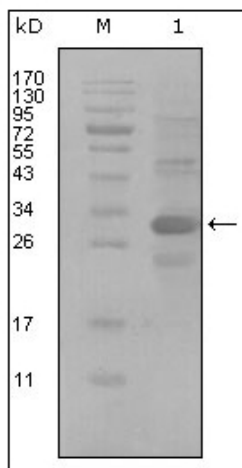
Product Type:	Primary Antibodies
Clone Name:	3F8B12
Applications:	ELISA, IHC, WB
Recommended Dilution:	ELISA: 1/10000. Immunohistochemistry on Paraffin Sections: 1/200 - 1/400. Western Blot: 1/500 - 1/2000.
Reactivity:	Human
Host:	Mouse
Isotype:	IgG2a
Clonality:	Monoclonal
Immunogen:	Recombinant protein encoding amino acids 405-424 of Human CD166/ALCAM.
Specificity:	Recognizes CD166 Antigen (ALCAM).
Formulation:	State: Ascites State: Ascites fluid containing 0.03% Sodium Azide as preservative
Conjugation:	Unconjugated
Storage:	Store the antibody undiluted at 2-8°C for one month or (in aliquots) at -20°C for longer. Avoid repeated freezing and thawing.
Stability:	Shelf life: one year from despatch.
Gene Name:	activated leukocyte cell adhesion molecule
Database Link:	Entrez Gene 214 Human Q13740
Background:	ALCAM(CD166): Activated leukocyte cell adhesion molecule. CD166 is a member of the Ig superfamily and is expressed on activated T-cells, B cells and other cells including thymic epithelial cells, fibroblasts, keratinocytes and neurons. CD6 has been identified as a receptor for CD166.
Synonyms:	ALCAM, MEMD, Activated leukocyte cell adhesion molecule
Protein Families:	Druggable Genome, ES Cell Differentiation/IPS, Transmembrane



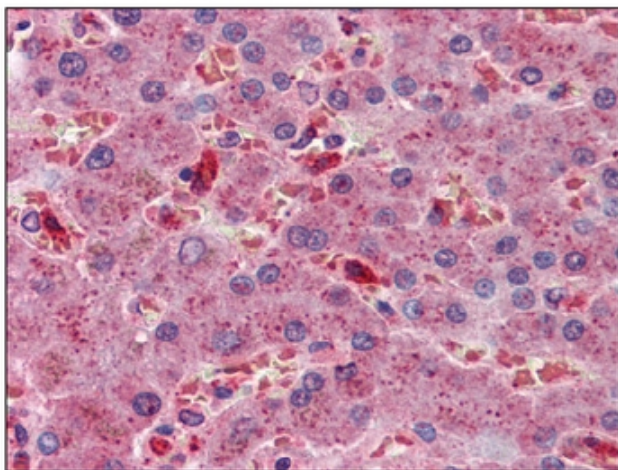
[View online »](#)

Protein Pathways: Cell adhesion molecules (CAMs)

Product images:



Western blot analysis using anti-ALCAM monoclonal antibody against truncated Trx-ALCAM recombinant protein (Lane 1).



Liver, Human: Formalin-Fixed, Paraffin-Embedded (FFPE)