

Product datasheet for **AM20448SU-N**

ErbB 3 (ERBB3) Mouse Monoclonal Antibody [Clone ID: 3F10F6]

Product data:

Product Type:	Primary Antibodies
Clone Name:	3F10F6
Applications:	ELISA, IHC, WB
Recommended Dilution:	ELISA: 1/10000. Immunohistochemistry on Paraffin Sections: 1/200 - 1/400. Western Blot: 1/500 - 1/2000.
Reactivity:	Human
Host:	Mouse
Isotype:	IgG1
Clonality:	Monoclonal
Immunogen:	Recombinant protein encoding amino acids 1175-1275 of Human ERBB3
Specificity:	Recognizes Receptor Protein Tyrosine Kinase ERBB-3 (Her3/ERBB3).
Formulation:	State: Ascites State: Ascites fluid containing 0.03% Sodium Azide as preservative
Conjugation:	Unconjugated
Storage:	Store the antibody undiluted at 2-8°C for one month or (in aliquots) at -20°C for longer. Avoid repeated freezing and thawing.
Stability:	Shelf life: one year from despatch.
Gene Name:	erb-b2 receptor tyrosine kinase 3
Database Link:	Entrez Gene 2065 Human P21860
Background:	ErbB3 is a member of the EGFR/erbB receptor tyrosine kinase family. ErbB3 lacks intrinsic kinase activity due to an amino acid substitution within the ATP binding site. Upon heterodimerization with the other erbB family members, erbB3 becomes phosphorylated at multiple tyrosine residues that represent docking sites for downstream signaling proteins, e.g. PI3K, grb7 and shc. The erbB3 cytoplasmic domain contains 6 docking sites for PI3K. Thus, erbB3 is a potent activator of the PI3K/PKB signaling pathway.
Synonyms:	ERBB-3, c-erbB-3, HER-3

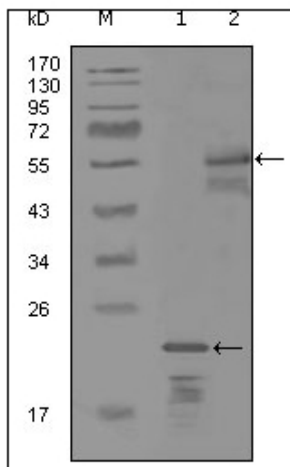


[View online »](#)

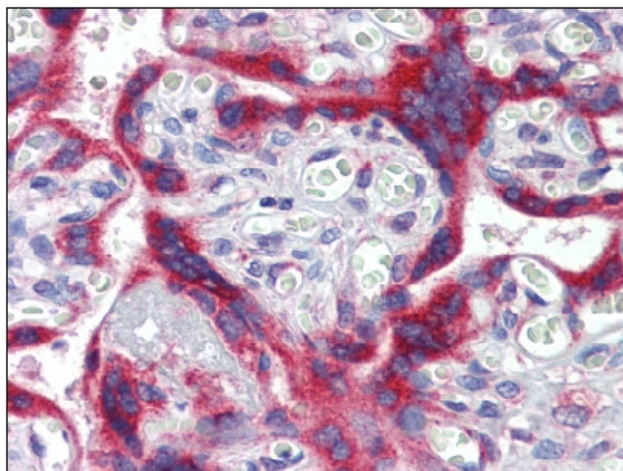
Protein Families: Adult stem cells, Druggable Genome, Protein Kinase, Secreted Protein, Stem cell - Pluripotency, Transmembrane

Protein Pathways: Calcium signaling pathway, Endocytosis, ErbB signaling pathway

Product images:



Western blot analysis using monoclonal anti-ERBB3 antibody against truncated Trx-ERBB3 recombinant protein (Lane 1) and MBP-ERBB3 (aa1175-1275) recombinant protein (Lane 2).



Placenta, Human: Formalin-Fixed, Paraffin-Embedded (FFPE)