

## Product datasheet for **AM20442PU-N**

### **ALOX15 Mouse Monoclonal Antibody [Clone ID: 3D8]**

#### **Product data:**

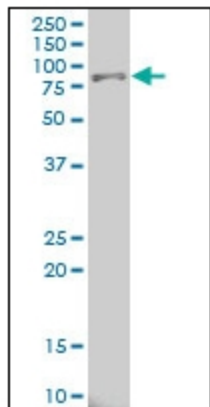
Product Type:	Primary Antibodies
Clone Name:	3D8
Applications:	ELISA, IHC, WB
Recommended Dilution:	<b>ELISA.</b> <b>Immunohistochemistry on Paraffin Sections:</b> 5 µg/ml. <b>Western Blot.</b>
Reactivity:	Human
Host:	Mouse
Isotype:	IgG2a
Clonality:	Monoclonal
Immunogen:	ALOX15 (AAH29032, 1 a.a. ~ 663 a.a) full length recombinant protein with GST tag.
Specificity:	Recognizes Arachidonate 15-lipoxygenase (ALOX15).
Formulation:	PBS, pH 7.2 State: Purified State: Liquid purified IgG fraction
Concentration:	lot specific
Purification:	Protein A Chromatography
Conjugation:	Unconjugated
Storage:	Store the antibody (in aliquots) at -20°C. Avoid repeated freezing and thawing.
Stability:	Shelf life: one year from despatch.
Gene Name:	arachidonate 15-lipoxygenase
Database Link:	<a href="#">Entrez Gene 246 Human P16050</a>
Background:	15 Lipoxygenase 1 converts arachidonic acid to 15S-hydroperoxyeicosatetraenoic acid. It also acts on C-12 of arachidonate as well as on linoleic acid. It is a monomer primarily found in reticulocytes and eosinophils.



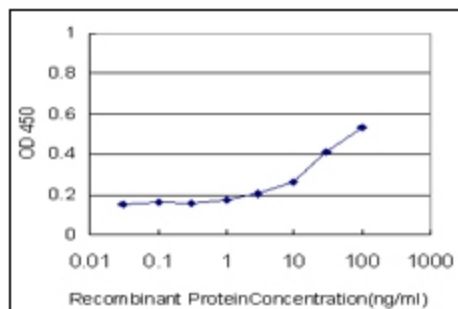
[View online »](#)

**Synonyms:** 15-LOX, Arachidonate 15-lipoxygenase  
**Protein Families:** Druggable Genome  
**Protein Pathways:** Arachidonic acid metabolism, Linoleic acid metabolism, Metabolic pathways

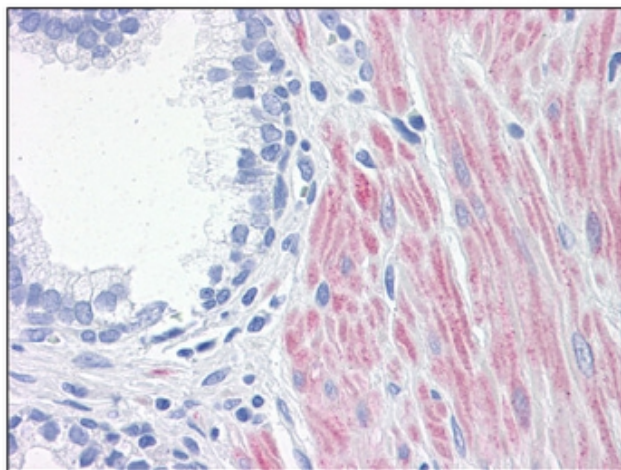
**Product images:**



Western Blot analysis of ALOX15 expression in Hela NE using Monoclonal ALOX15 antibody (clone 3D8).



ELISA: Detection limit for recombinant GST tagged ALOX15 is approximately 3 ng/ml as a capture antibody.



Human Prostate: Formalin-Fixed, Paraffin-Embedded (FFPE)