

## Product datasheet for **AM20433PU-N**

### **BubR1 (BUB1B) Mouse Monoclonal Antibody [Clone ID: 2G5]**

#### **Product data:**

Product Type:	Primary Antibodies
Clone Name:	2G5
Applications:	ELISA, IF, IHC, PLA, RNAi, WB
Recommended Dilution:	<b>ELISA.</b> <b>Immunohistochemistry on Paraffin Sections:</b> 5 µg/ml. <b>PLA.</b> <b>RNAi.</b> <b>Western Blot.</b>
Reactivity:	Human
Host:	Mouse
Isotype:	IgG
Clonality:	Monoclonal
Immunogen:	BUB1B (AAH18739, 1 a.a. ~ 130 a.a) partial recombinant protein with GST tag.
Specificity:	Recognizes Mitotic Checkpoint Kinase MAD3I (BUB1B).
Formulation:	PBS, pH 7.2 State: Purified State: Liquid purified Ig fraction
Concentration:	lot specific
Purification:	Protein A Chromatography
Conjugation:	Unconjugated
Storage:	Store the antibody (in aliquots) at -20°C. Avoid repeated freezing and thawing.
Stability:	Shelf life: one year from despatch.
Gene Name:	BUB1 mitotic checkpoint serine/threonine kinase B
Database Link:	<a href="#">Entrez Gene 701 Human</a> <a href="#">O60566</a>



[View online »](#)

**Background:**

BUBR1 Kinase (also called Mitotic checkpoint serine/threonine-protein kinase, BUB1 beta, MAD3/BUB1-related protein kinase, Mitotic checkpoint kinase MAD3L and SSK1) is a probable component of the mitotic checkpoint that delays anaphase until all chromosomes are properly attached to the mitotic spindle. This protein can interact with BUB3, CENP-F, CENP-E and mitosin. BUBR1 Kinase is found within the cytoplasm in interphase cells, but when bound to BUB3 or CENP-E, it can be localized to nuclear kinetochores. This protein is highly expressed in thymus followed by spleen. Defects in BUB1B are associated with tumor formation.

**Synonyms:**

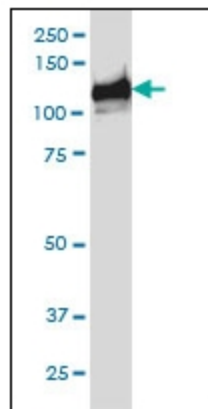
Protein SSK1, BUBR1, MAD3L, BUB1 beta

**Protein Families:**

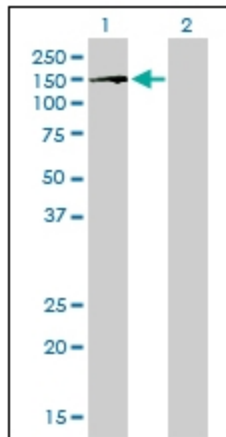
Druggable Genome, Protein Kinase, Stem cell - Pluripotency

**Protein Pathways:**

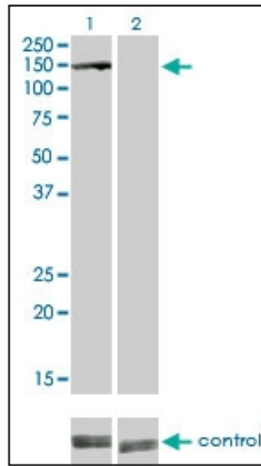
Cell cycle

**Product images:**


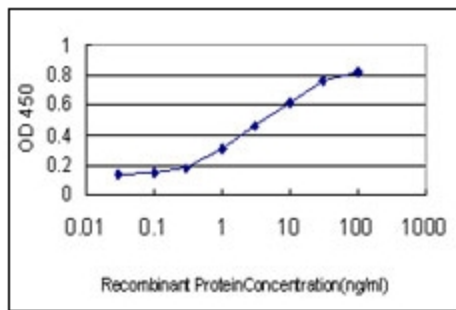
Western Blot analysis of BUB1B expression in HeLa NE using Monoclonal BUB1B antibody (clone 2G5).



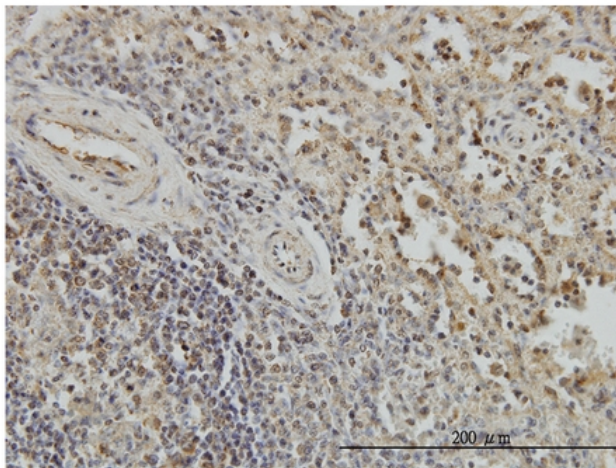
Western Blot analysis of BUB1B expression in transfected 293T cell line using Monoclonal BUB1B antibody (clone 2G5).



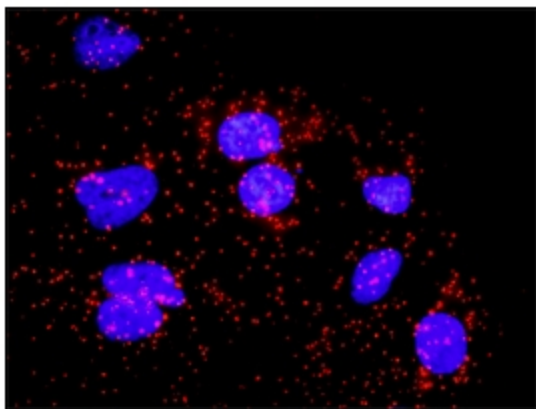
RNAi Knockdown (Antibody validated): Western blot analysis of BUB1B over-expressed 293 cell line, cotransfected with BUB1B Validated Chimera RNAi (Cat#H00000701-R01V) (Lane 2) or non-transfected control (Lane 1). Blot probed with AM20433PU-N BUB1B antibody (clone 2G5). GAPDH (36.1 kDa) used as specificity and loading control.



Detection limit for recombinant GST tagged BUB1B is approximately 0.03 ng/ml as a capture antibody.



Immunoperoxidase of monoclonal BUB1B antibody on Formalin-Fixed Paraffin-Embedded Human spleen at 3 ug/ml.



Proximity Ligation Analysis (PLA) of protein-protein interactions between CDC20 and BUB1B. HeLa cells were stained with anti-CDC20 Rabbit purified polyclonal 1/1200 and anti-BUB1B Mouse monoclonal antibody 1/50. Signals were detected by Duolink® 30 Detection Kit 613 (Red), and nuclei were counterstained with DAPI (blue). Each Red dot represents the detection of protein-protein interaction complex.