

Product datasheet for **AM20431PU-N**

ATP5F1E Mouse Monoclonal Antibody [Clone ID: 2F3]

Product data:

Product Type:	Primary Antibodies
Clone Name:	2F3
Applications:	ELISA, IHC, WB
Recommended Dilution:	ELISA. Immunohistochemistry on Paraffin Sections: 5 µg/ml. Western Blot.
Reactivity:	Human
Host:	Mouse
Isotype:	IgG1
Clonality:	Monoclonal
Immunogen:	ATP5E (AAH01690, 1 a.a. ~ 52 a.a) full length recombinant protein with GST tag.
Specificity:	Recognizes
Formulation:	PBS, pH 7.2 State: Purified State: Liquid purified IgG fraction
Concentration:	lot specific
Purification:	Protein A Chromatography
Conjugation:	Unconjugated
Storage:	Store the antibody (in aliquots) at -20°C. Avoid repeated freezing and thawing.
Stability:	Shelf life: one year from despatch.
Gene Name:	ATP synthase, H ⁺ transporting, mitochondrial F1 complex, epsilon subunit
Database Link:	Entrez Gene 514 Human P56381



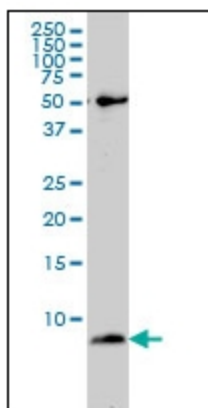
[View online »](#)

Background: Mitochondrial ATP synthase catalyzes ATP synthesis and is composed of two linked multi-subunit complexes: the soluble catalytic core, F1, and the membrane-spanning component, F0, comprising the proton channel. The soluble F1 catalytic unit is attached to the mitochondrial inner membrane via the F0 unit. ATP5E is the smallest of the 5 chains of the enzymatic F1 component of the mitochondrial ATPase complex.

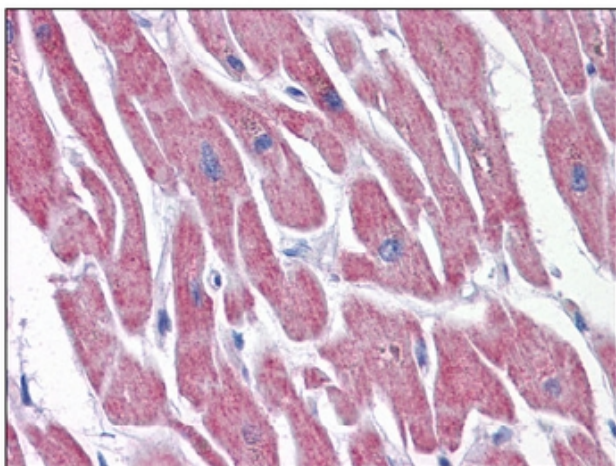
Synonyms: ATP5E, Complex V subunit epsilon, F1F0 ATPase subunit epsilon

Protein Pathways: Alzheimer's disease, Huntington's disease, Metabolic pathways, Oxidative phosphorylation, Parkinson's disease

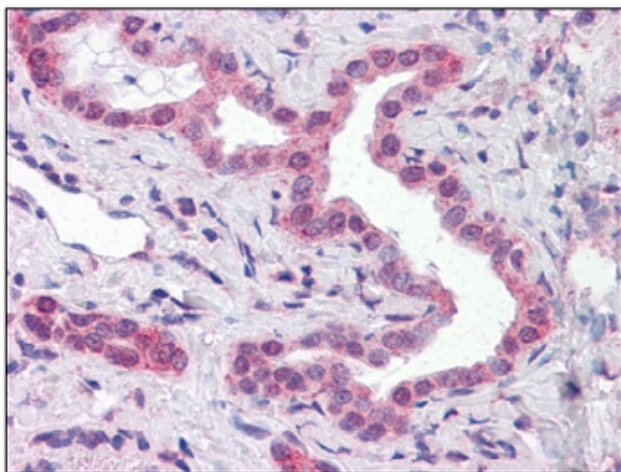
Product images:



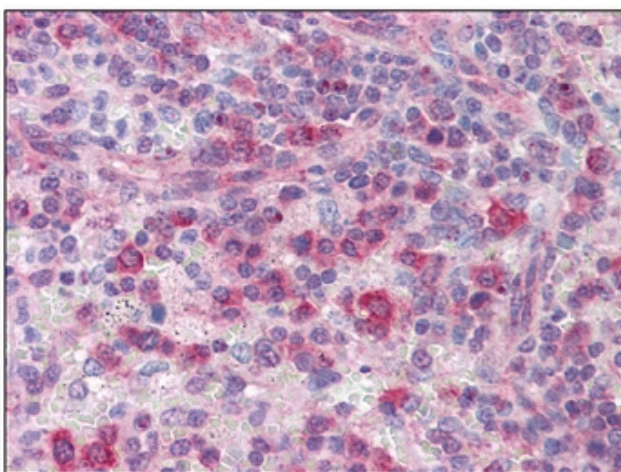
ATP5E monoclonal antibody, clone 2F3 Western Blot analysis of ATP5E expression in SW-13.



Human Heart: Formalin-Fixed, Paraffin-Embedded (FFPE)



Human Liver, bile ducts: Formalin-Fixed, Paraffin-Embedded (FFPE)



Human Spleen: Formalin-Fixed, Paraffin-Embedded (FFPE)