

Product datasheet for **AM20428SU-N**

Laminin beta 1 (LAMB1) Mouse Monoclonal Antibody [Clone ID: 2D9G5]

Product data:

Product Type:	Primary Antibodies
Clone Name:	2D9G5
Applications:	ELISA, IHC, WB
Recommended Dilution:	ELISA. Immunohistochemistry on Paraffin Sections: 1/200. Western Blot: 1/500 - 1/2000.
Reactivity:	Human
Host:	Mouse
Isotype:	IgG2a
Clonality:	Monoclonal
Immunogen:	Purified recombinant fragment of LAMB1 (aa 31-270) expressed in E. Coli
Specificity:	Recognizes Laminin Beta-1 (LAMB1).
Formulation:	State: Ascites State: Ascites fluid containing 0.03% Sodium Azide as preservative.
Conjugation:	Unconjugated
Storage:	Store the antibody undiluted at 2-8°C for one month or (in aliquots) at -20°C for longer. Avoid repeated freezing and thawing.
Stability:	Shelf life: one year from despatch.
Gene Name:	laminin subunit beta 1
Database Link:	Entrez Gene 3912 Human P07942



[View online »](#)

Background:

Laminins are essential and abundant structural non-collagenous glycoproteins localizing to basement membranes. Basement membranes (cell-associated extracellular matrices (ECMs)) are polymers of Laminins with stabilizing type IV collagen networks, nidogen and several proteoglycans. Basement membranes are found under epithelial layers, around the endothelium of blood vessels and surrounding muscle, peripheral nerve and fat cells. Formation of basement membranes influences cell proliferation, phenotype, migration, gene expression and tissue architecture. Each Laminin is a heterotrimer of alpha, beta and gamma chain subunits that undergoes cell-secretion and incorporation into the ECM. Laminins can self-assemble and bind to other matrix macromolecules, and have unique and shared cell interactions mediated by Integrins, dystroglycan and cognate Laminin receptors. The human Laminin gamma-1 gene maps to chromosome 1q31 and is ubiquitously expressed in tissues that produce basement membranes.

Synonyms:

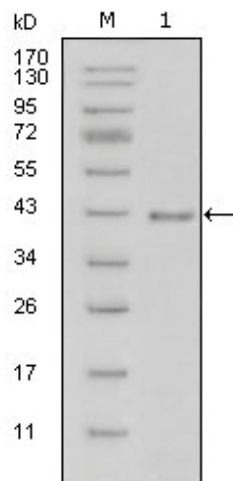
Laminin B1 chain, Laminin-1 subunit beta, Laminin-10 subunit beta, Laminin-12 subunit beta, Laminin-2 subunit beta, Laminin-6 subunit beta, Laminin-8 subunit beta

Protein Families:

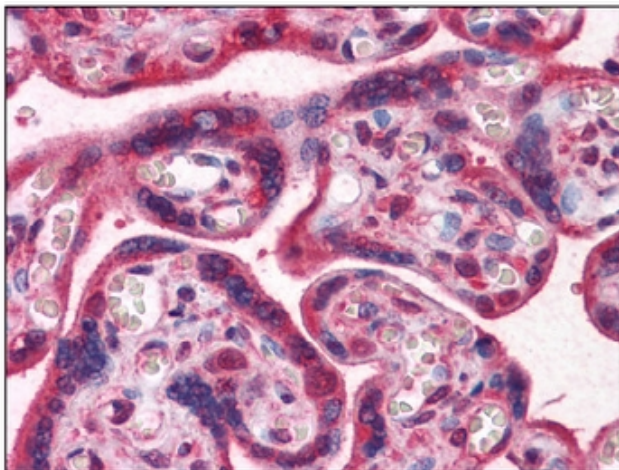
Druggable Genome, Secreted Protein

Protein Pathways:

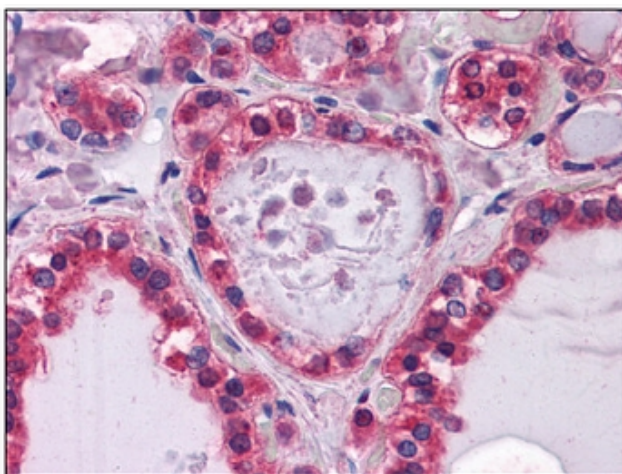
ECM-receptor interaction, Focal adhesion, Pathways in cancer, Small cell lung cancer

Product images:

Western blot analysis using monoclonal anti-LAMB1 antibody against truncated LAMB1-His recombinant protein (Lane 1).



Formalin-Fixed, Paraffin-Embedded Human Placenta stained with LAMB1 antibody Cat.-No AM20428SU-N



Formalin-Fixed, Paraffin-Embedded Human Thyroid stained with LAMB1 antibody Cat.-No AM20428SU-N