

Product datasheet for **AM20421PU-N**

CCR5 Mouse Monoclonal Antibody [Clone ID: T21/8]

Product data:

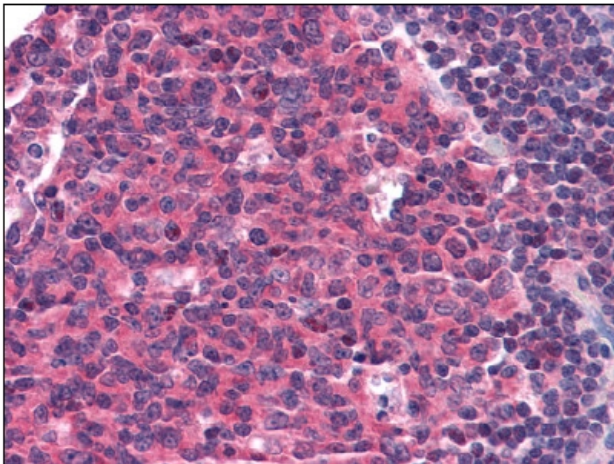
Product Type:	Primary Antibodies
Clone Name:	T21/8
Applications:	ELISA, FC, IHC, IP, WB
Recommended Dilution:	ELISA. Flow Cytometry: This T21/8 (T21/8) antibody has been tested by Flow cytometric analysis of normal human peripheral blood cells. This can be used at less than or equal to 0.5 µg per test. A test is defined as the amount (µg) of antibody that will stain a cell sample in a final volume of 100 µl. Cell number should be determined empirically but can range from 10 ⁵ to 10 ⁸ cells/test. It is recommended that the antibody be carefully titrated for optimal performance in the assay of interest. Immunohistochemistry on Paraffin Sections: 20 µg/ml. Immunoprecipitation. Western Blot.
Reactivity:	Human
Host:	Mouse
Isotype:	IgG1
Clonality:	Monoclonal
Immunogen:	Human CCR5
Specificity:	Recognizes C-C Chemokine Receptor 5 (CCR5).
Formulation:	Aqueous buffer containing 0.09% Sodium Azide as preservative and may contain carrier protein/stabilizer State: Aff - Purified State: Liquid purified IgG fraction
Concentration:	lot specific
Purification:	Affinity Chromatography
Conjugation:	Unconjugated
Storage:	Store undiluted at 2-8°C for one month or (in aliquots) at -20°C for longer. Avoid repeated freezing and thawing.



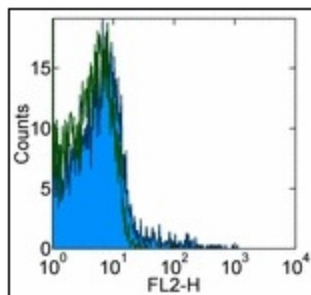
[View online »](#)

Stability:	Shelf life: one year from despatch.
Gene Name:	C-C motif chemokine receptor 5 (gene/pseudogene)
Database Link:	Entrez Gene 1234 Human P51681
Background:	Human CD195 is a member of the G protein coupled superfamily of receptors, which acts as a receptor for a number of chemokines including RANTES and also serves as a co-receptor for the entry of HIV into cells. It plays a key role in regulating the activation and migration of leukocytes. CD195 is expressed by a subset of T lymphocytes and by monocytes. CD195 is rapidly phosphorylated within the C-terminal domain upon ligand stimulation. Recent studies suggest that phosphorylation at Ser337 is mediated by Protein kinase C, whereas phosphorylation at Ser349 is mediated by GPCR kinases.
Synonyms:	C-C chemokine receptor type 5, C-C CKR-5, CC-CKR-5, CCR-5, CMKBR5, CHEMR13
Protein Families:	Druggable Genome, ES Cell Differentiation/IPS, GPCR, Transmembrane
Protein Pathways:	Chemokine signaling pathway, Cytokine-cytokine receptor interaction, Endocytosis

Product images:



Formalin-Fixed, Paraffin-Embedded Human Tonsil stained with CCR5 Antibody at 20 ug/ml after heat-induced antigen retrieval.



Staining of normal Human peripheral blood cells with 0.25 ug of Purified Mouse IgG1, K Isotype Control (open histogram) or 0.25 ug of Purified anti-human CCR5 antibody (T21/8) (colored histogram) followed by Biotin Anti-Mouse IgG and SAv-PE. Cells in the lymphocyte gate were used for analysis.