

## Product datasheet for **AM20419PU-N**

### Apolipoprotein A II (APOA2) Mouse Monoclonal Antibody [Clone ID: 1H6]

#### Product data:

Product Type:	Primary Antibodies
Clone Name:	1H6
Applications:	ELISA, IHC, WB
Recommended Dilution:	<b>ELISA.</b> <b>Immunohistochemistry on Paraffin Sections:</b> 2.5 µg/ml. <b>Western Blot.</b>
Reactivity:	Human
Host:	Mouse
Isotype:	IgG1
Clonality:	Monoclonal
Immunogen:	APOA2 (AAH05282, 1 a.a. ~ 101 a.a) full-length recombinant protein with GST tag.
Specificity:	Recognizes Human Apolipoprotein AII (APOA2). Other species not tested.
Formulation:	PBS, pH 7.2 State: Purified State: Liquid purified IgG fraction
Purification:	Protein A Chromatography
Conjugation:	Unconjugated
Storage:	Upon receipt, store undiluted (in aliquots) at -20°C. Avoid repeated freezing and thawing.
Stability:	Shelf life: one year from despatch.
Gene Name:	apolipoprotein A2
Database Link:	<a href="#">Entrez Gene 336 Human</a> <a href="#">P02652</a>



[View online »](#)

**Background:**

Apolipoprotein A II is the second most abundant protein of the high density lipoprotein particles. The apolipoprotein A II gene consists of 4 exons and 3 introns. The four exons encode the 5' untranslated region, pre peptide, a short N terminal domain and a C terminal domain composed of a variable number of lipid binding amphipathic helices. Familial apolipoprotein A II deficiency may result from a splice junction alteration which blocks splicing of intron 3 from the primary transcript and result in the formation of a non functional mRNA.

**Synonyms:**

Apolipoprotein A-II, Apolipoprotein A2, Apo-AII, ApoA-II, APOA2

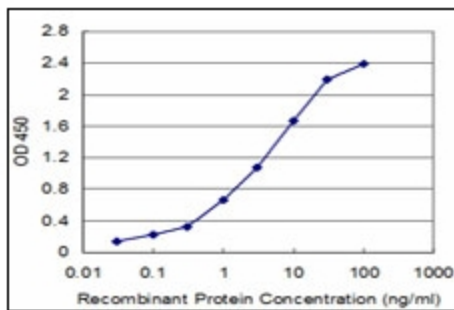
**Protein Families:**

Druggable Genome, Secreted Protein

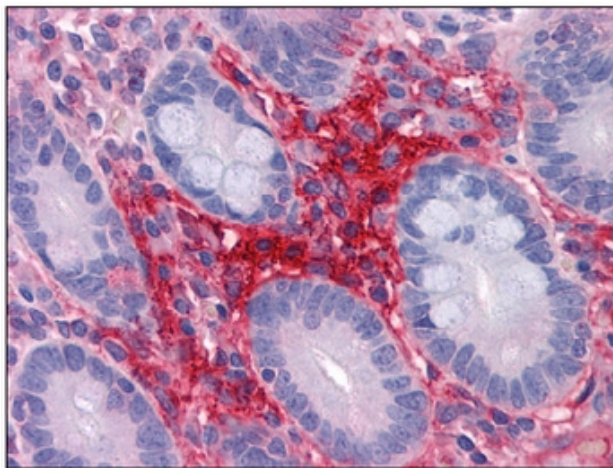
**Protein Pathways:**

PPAR signaling pathway

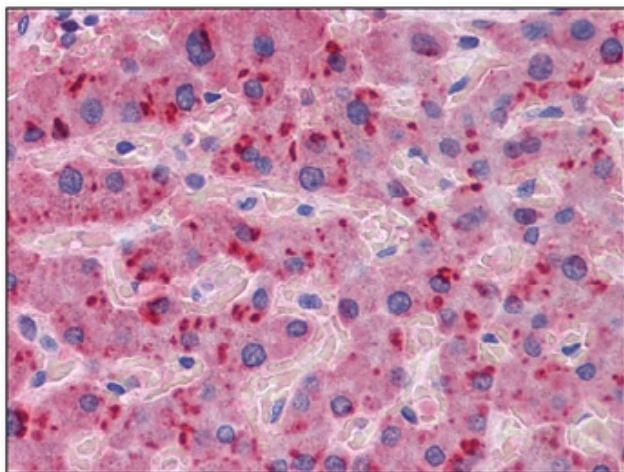
**Product images:**



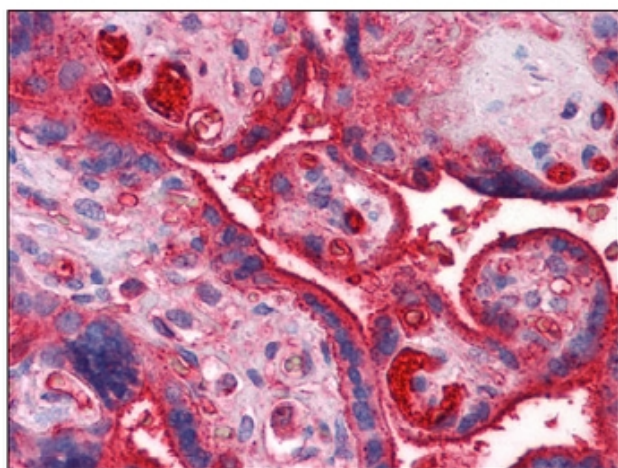
Detection limit for recombinant GST tagged APOA2 is approximately 0.03 ng/ml as a capture antibody.



Human Small intestine: Formalin-Fixed, Paraffin-Embedded (FFPE)



Human Liver: Formalin-Fixed, Paraffin-Embedded (FFPE)



Human Placenta: Formalin-Fixed, Paraffin-Embedded (FFPE)