

Product datasheet for **AM20406SU-N**

Eph receptor A2 (EPHA2) Mouse Monoclonal Antibody [Clone ID: 1B3C7]

Product data:

Product Type:	Primary Antibodies
Clone Name:	1B3C7
Applications:	ELISA, IHC, WB
Recommended Dilution:	ELISA: 1/10000. Immunohistochemistry on Paraffin Sections: 1/200 - 1/400. Western Blot: 1/500 - 1/2000.
Reactivity:	Human
Host:	Mouse
Isotype:	IgM
Clonality:	Monoclonal
Immunogen:	Purified recombinant fragment of EphA2 expressed in E. Coli.
Specificity:	Recognizes Ephrin Type A Receptor 2 (EPHA2).
Formulation:	State: Ascites State: Ascites fluid containing 0.03% Sodium Azide as preservative.
Conjugation:	Unconjugated
Storage:	Store the antibody undiluted at 2-8°C for one month or (in aliquots) at -20°C for longer. Avoid repeated freezing and thawing.
Stability:	Shelf life: one year from despatch.
Gene Name:	EPH receptor A2
Database Link:	Entrez Gene 1969 Human P29317
Background:	The Eph family of receptors is the largest known subfamily of receptor tyrosine kinases (RTK). Eph RTKs and their ligands, the ephrins, are frequently overexpressed in a variety of cancers and tumor cell lines. One Eph family member, EphA2, is also overexpressed in a wide variety of cancers, including breast, small-cell lung and gastrointestinal cancers, melanomas, and neuroblastomas. The ephrin-Eph interactions are important in development, especially in cell-cell interactions involved in nervous system patterning and possibly in cancer.
Synonyms:	Ephrin type-A receptor 2, Epithelial cell kinase, Eph receptor A2



[View online »](#)

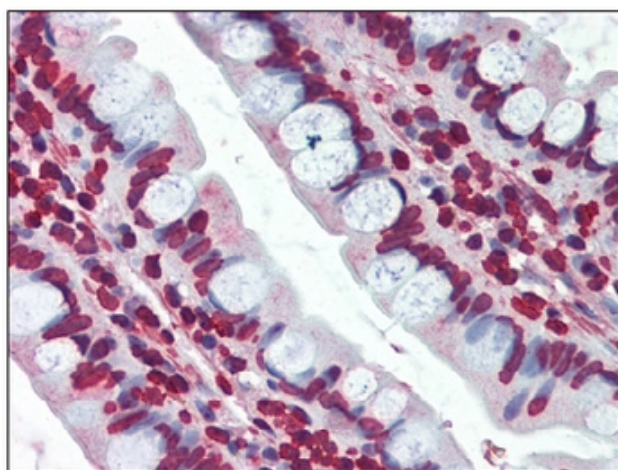
Protein Families: Druggable Genome, Protein Kinase, Transmembrane

Protein Pathways: Axon guidance

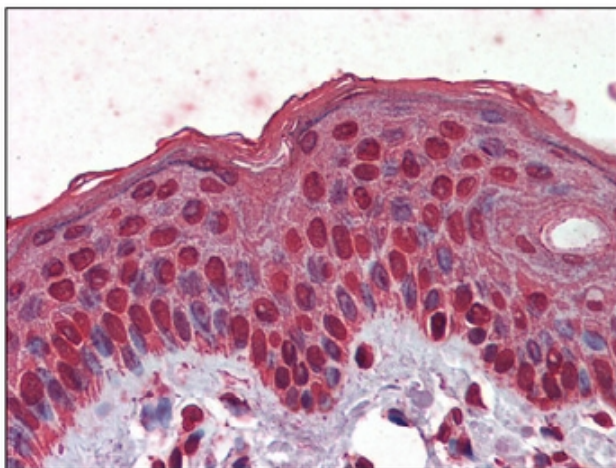
Product images:



Western blot analysis using anti-Human EphA2 monoclonal antibody against NIH3T3 cell lysate.



Small intestine, Human: Formalin-Fixed, Paraffin-Embedded (FFPE)



Skin, Human: Formalin-Fixed, Paraffin-Embedded (FFPE)