

Product datasheet for **AM20403PU-N**

Annexin IV (ANXA4) Mouse Monoclonal Antibody [Clone ID: 1D3]

Product data:

| | |
|-----------------------|--|
| Product Type: | Primary Antibodies |
| Clone Name: | 1D3 |
| Applications: | ELISA, IHC, WB |
| Recommended Dilution: | ELISA: 2.5 µg/ml. Immunohistochemistry on Paraffin Sections: 5 µg/ml. Western Blot: 1/500 - 1/1000. |
| Reactivity: | Human |
| Host: | Mouse |
| Isotype: | IgG2a |
| Clonality: | Monoclonal |
| Immunogen: | ANXA4 (AAH00182, 1 a.a. ~ 322 a.a) full-length recombinant protein with GST tag. |
| Specificity: | Recognizes Annexin A4/ANXA4. |
| Formulation: | PBS, pH 7.2 State: Purified State: Liquid purified IgG fraction |
| Concentration: | lot specific |
| Purification: | Protein A Chromatography |
| Conjugation: | Unconjugated |
| Storage: | Store the antibody undiluted at -20°C. Avoid repeated freezing and thawing. |
| Stability: | Shelf life: one year from despatch. |
| Gene Name: | annexin A4 |
| Database Link: | Entrez Gene 307 Human P09525 |



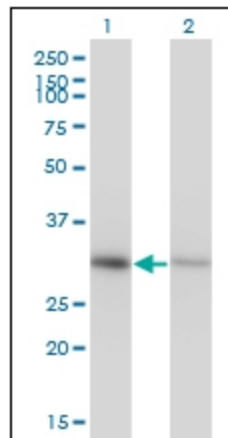
[View online »](#)

Background:

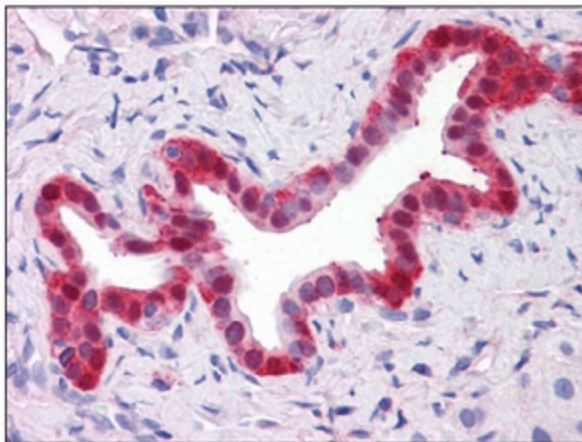
Annexin IV (ANX4) belongs to the annexin family of calcium-dependent phospholipid binding proteins. Although their functions are still not clearly defined, several members of the annexin family have been implicated in membrane-related events along exocytotic and endocytotic pathways. ANX4 has 45 to 59% identity with other members of its family and shares a similar size and exon-intron organization. Isolated from human placenta, ANX4 encodes a protein that has possible interactions with ATP, and has in vitro anticoagulant activity and also inhibits phospholipase A2 activity. ANX4 is almost exclusively expressed in epithelial cells.

Synonyms:

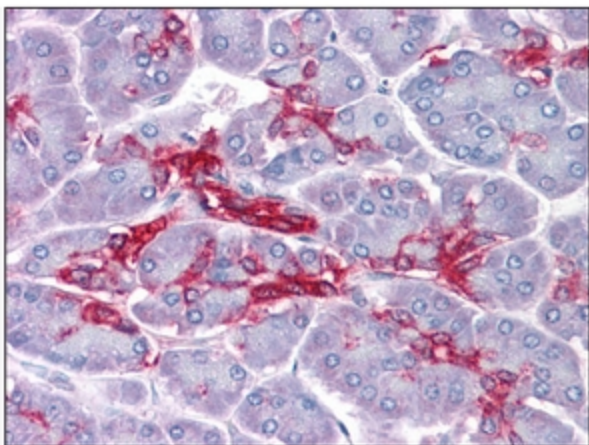
ANX4, Annexin-4, Annexin IV, Lipocortin IV, Endonexin I, Chromobindin-4, Protein II, P32.5, PP4-X, 35-beta calcimedlin, PAP-II

Product images:


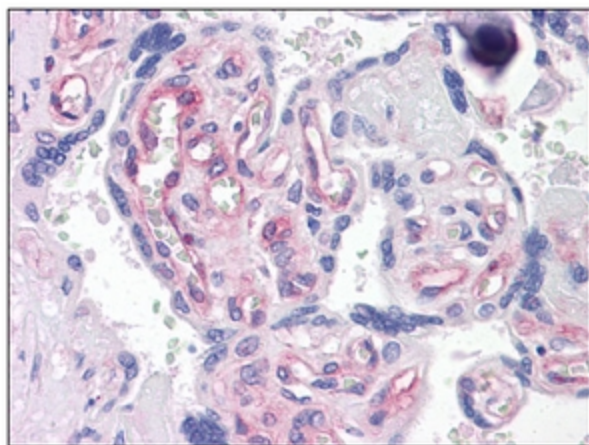
Western Blot analysis of ANXA4 expression in transfected 293T cell line by ANXA4 monoclonal antibody, clone 1D3.



Human Liver, bile duct: Formalin-Fixed, Paraffin-Embedded (FFPE)



Human Pancreas: Formalin-Fixed, Paraffin-Embedded (FFPE)



Human Placenta: Formalin-Fixed, Paraffin-Embedded (FFPE)