

Product datasheet for **AM20395SU-N**

Pea3 (ETV4) (50-109) Mouse Monoclonal Antibody [Clone ID: 1A2G3]

Product data:

Product Type:	Primary Antibodies
Clone Name:	1A2G3
Applications:	ELISA, IHC, WB
Recommended Dilution:	ELISA: 1/10000. Immunohistochemistry on Paraffin Sections: 1/200. Western Blot: 1/500 - 1/2000.
Reactivity:	Human
Host:	Mouse
Isotype:	IgG1
Clonality:	Monoclonal
Immunogen:	Recombinant protein encoding amino acids 50-109 of Human ETV4.
Specificity:	Recognizes Adenovirus E1a Enhancer Binding Protein (ETV4).
Formulation:	State: Ascites State: Ascites fluid containing 0.03% Sodium Azide as preservative.
Conjugation:	Unconjugated
Storage:	Store the antibody undiluted at 2-8°C for one month or (in aliquots) at -20°C for longer. Avoid repeated freezing and thawing.
Stability:	Shelf life: one year from despatch.
Gene Name:	ETS variant 4
Database Link:	Entrez Gene 2118 Human P43268



[View online »](#)

Background:

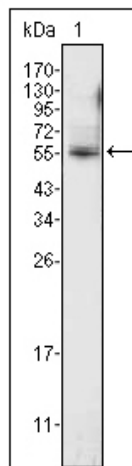
ETV4: ets variant gene 4 (E1A enhancer binding protein, E1AF). Several members of the Ets gene family are known to encode sequence specific DNA binding proteins. These include mouse PU.1, mouse and human Ets-1, Drosophila E74, chicken and human Ets-2 and rat GABP- α . Each of these proteins recognizes similar motifs in DNA that share a centrally located 5'-GGAA-3' element. For instance, PEA3 binds the motif 5'-AGGAAG-3' (the PEA-3 motif), but does not bind to the sequence 5'-AGGAAC-3', recognized by PU.1, although PU.1 binds equally well to both sequences. It appears that all of the Ets proteins recognize the same central core sequence but that each protein interacts with unique sequences that flank this core. PEA3 is expressed at readily detectable levels in cells of epithelial and fibroblastic origin but is not expressed in hematopoietic cells. This is in contrast to other members of the Ets gene family, such as Ets-1, Ets-2 and Fli-1, each of which is expressed primarily in cells of hematopoietic origin.

Synonyms:

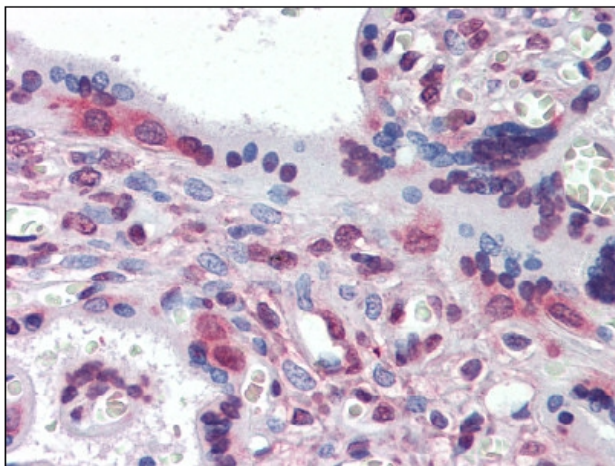
E1AF, E1A-F

Protein Families:

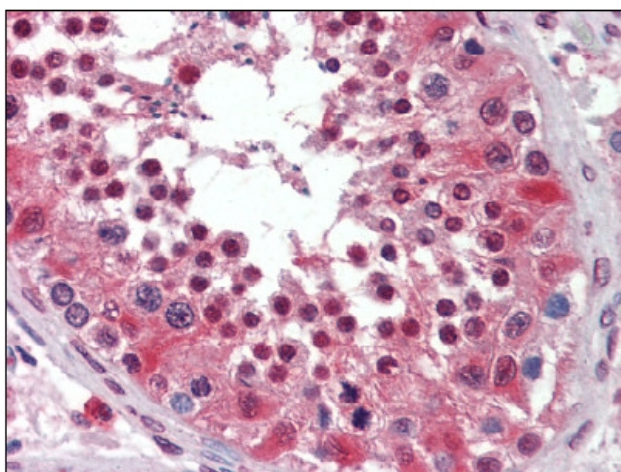
Druggable Genome, Transcription Factors

Product images:

Western blot analysis using anti-ETV4 antibody against K562 cell lysate (Lane 1).



Placenta, Human: Formalin-Fixed, Paraffin-Embedded (FFPE)



Testis, Human: Formalin-Fixed, Paraffin-Embedded (FFPE)