

Product datasheet for **AM20393SU-N**

Integrin alpha 5 (ITGA5) Mouse Monoclonal Antibody [Clone ID: 10F6]

Product data:

| | |
|-----------------------|--|
| Product Type: | Primary Antibodies |
| Clone Name: | 10F6 |
| Applications: | ELISA, FC, IHC, WB |
| Recommended Dilution: | ELISA. Flow Cytometry: 1/200 - 1/400. Immunohistochemistry on Paraffin Sections: 1/200. Western Blot: 1/500 - 1/2000. |
| Reactivity: | Human |
| Host: | Mouse |
| Isotype: | IgG2a |
| Clonality: | Monoclonal |
| Immunogen: | Recombinant ITGA5 protein |
| Specificity: | Recognizes Integrin, Alpha 5 (Fibronectin Receptor, Alpha Polypeptide/ITGA5). |
| Formulation: | State: Ascites State: Ascites fluid containing 0.03% Sodium Azide as preservative. |
| Conjugation: | Unconjugated |
| Storage: | Store the antibody undiluted at 2-8°C for one month or (in aliquots) at -20°C for longer. Avoid repeated freezing and thawing. |
| Stability: | Shelf life: one year from despatch. |
| Gene Name: | integrin subunit alpha 5 |
| Database Link: | Entrez Gene 3678 Human P08648 |



[View online »](#)

Background:

CD49e is the integrin alpha 5 chain. Integrins are heterodimeric integral membrane proteins composed of an alpha chain and a beta chain. Alpha chain 5 undergoes post translational cleavage in the extracellular domain to yield disulfide linked light and heavy chains that join with beta 1 to form a fibronectin receptor that is known variously: in lymphocytes as very late (activation) antigen 5 (VLA5); in platelets as glycoprotein IICla; and in fibroblasts as extracellular matrix receptor 6 (ECMVI).

In addition to adhesion, integrins are known to participate in cell surface mediated signalling.

Synonyms:

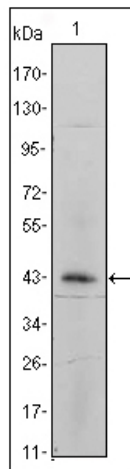
Integrin alpha-5, Fibronectin receptor subunit alpha, Integrin alpha-F, VLA-5, VLA5, FNRA

Protein Families:

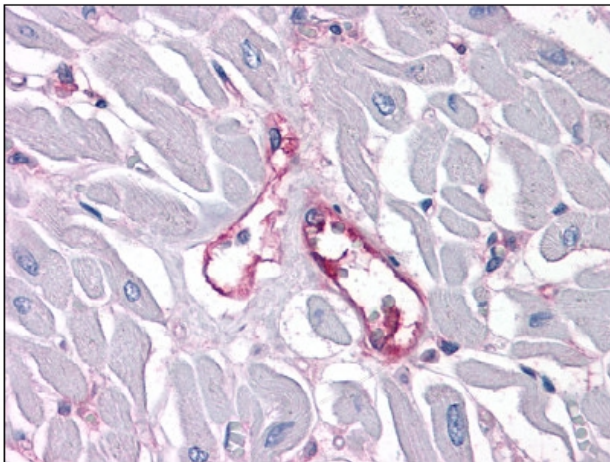
Druggable Genome, ES Cell Differentiation/IPS, Transmembrane

Protein Pathways:

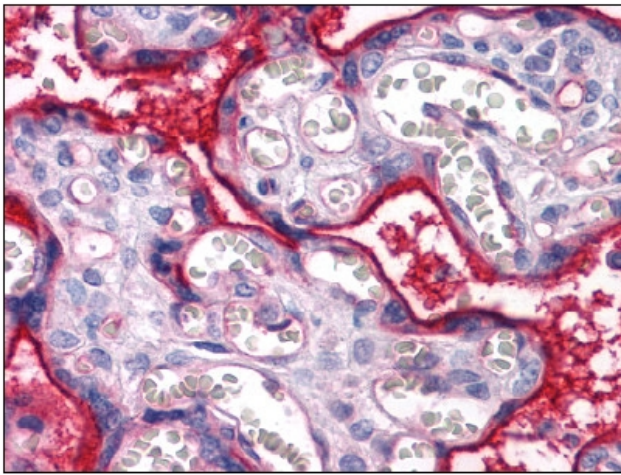
Arrhythmogenic right ventricular cardiomyopathy (ARVC), Dilated cardiomyopathy, ECM-receptor interaction, Focal adhesion, Hematopoietic cell lineage, Hypertrophic cardiomyopathy (HCM), Regulation of actin cytoskeleton

Product images:


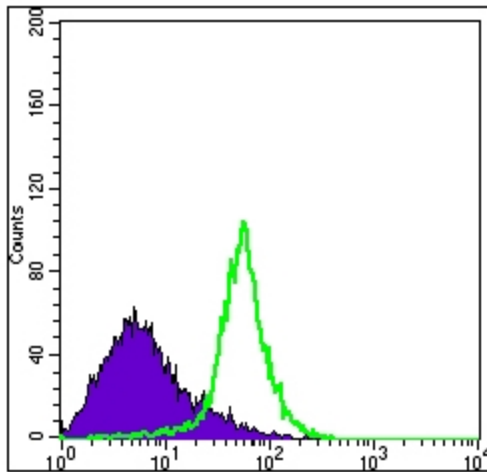
Western blot analysis using ITGA5 antibody against ITGA5-hlgGfc transfected HEK293 cell lysate.



Human Heart, capillaries: Formalin-Fixed, Paraffin-Embedded (FFPE)



Human Placenta: Formalin-Fixed, Paraffin-Embedded (FFPE)



Flow Cytometric analysis of HeLa cells using anti-ITGA5 antibody (green) and negative control (purple).