

Product datasheet for **AM20277PU-N**

IP10 (CXCL10) Mouse Monoclonal Antibody

Product data:

Product Type:	Primary Antibodies
Applications:	ELISA, WB
Recommended Dilution:	Sandwich ELISA: In a Sandwich ELISA (assuming 100 µl/well), a concentration of 1.0-2.0 µg/ml of this antibody will detect at least 1000 pg/ml of recombinant Human IP-10 when used with Biotinylated Antigen Affinity Purified anti-Human IP-10 (<i>Cat.-No</i> PP1039B1 or PP1039B2) as the detection antibody at a concentration of approximately 0.25 µg/ml. Western Blot: To detect Human IP-10 by Western Blot analysis this antibody can be used at a concentration of 0.25-0.50 µg/ml (non-reducing) or at a concentration of 1.0-2.0 µg/ml (reducing). When used in conjunction with compatible secondary reagents the detection limit for recombinant Human IP-10 is 0.20-0.40 ng/lane under non-reducing conditions and 2.00-4.00 ng/lane under reducing conditions.
Reactivity:	Human
Host:	Mouse
Clonality:	Monoclonal
Immunogen:	Highly pure E.coli derived recombinant Human IP-10 (<i>Cat.-No</i> PA092)
Specificity:	Recognizes Human IP-10. Other species not tested.
Formulation:	PBS without preservatives State: Azide Free State: Lyophilized (sterile filtered) purified IgG fraction
Reconstitution Method:	Centrifuge vial prior to opening. Restore in sterile water to a concentration of 1.0 mg/ml.
Purification:	Affinity Chromatography on Protein A
Conjugation:	Unconjugated
Storage:	Store lyophilized at 2-8°C for 6 months or at -20°C long term. After reconstitution store the antibody undiluted at 2-8°C for one month or (in aliquots) at -20°C long term. Avoid repeated freezing and thawing.
Stability:	Shelf life: one year from despatch.
Gene Name:	C-X-C motif chemokine ligand 10



[View online »](#)

Database Link: [Entrez Gene 3627 Human P02778](#)

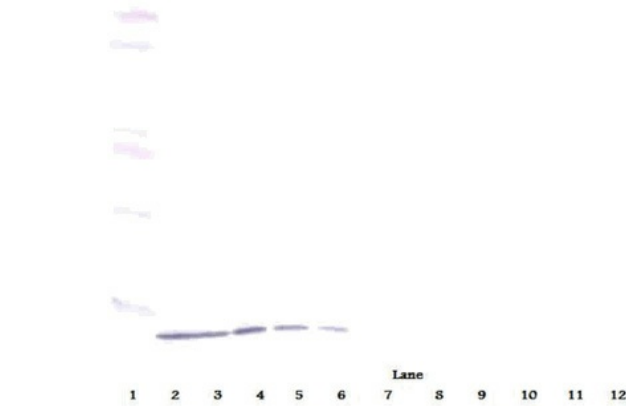
Background: Chemokines are members of a superfamily of inducible, secreted, proinflammatory cytokines. Members of the chemokine family exhibit 20% to 50% homology in their predicted amino acid sequences and are divided into several subfamilies. The C-X-C chemokine subfamily includes IL-8, GROa/b/g (and the murine homologs KC, MIP-2a and MIP-2b), platelet basic protein, ENA-78, GCP-2, PF4, IP-10 (and its murine homolog, CRG) and MIG.

Synonyms: C-X-C motif chemokine 10, Small-inducible cytokine B10, Gamma-IP10, INP10, SCYB10

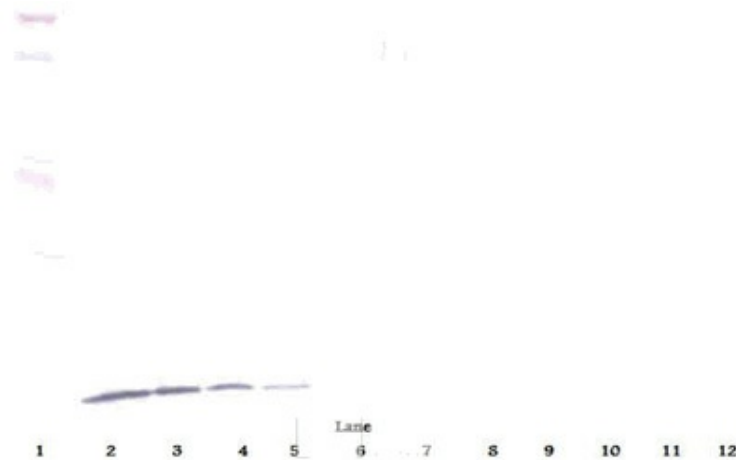
Protein Families: Druggable Genome, Secreted Protein, Transmembrane

Protein Pathways: Chemokine signaling pathway, Cytokine-cytokine receptor interaction, Cytosolic DNA-sensing pathway, RIG-I-like receptor signaling pathway, Toll-like receptor signaling pathway

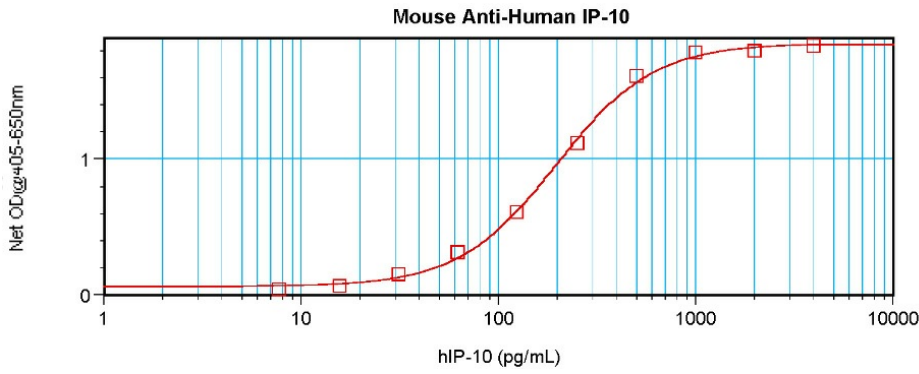
Product images:



Western Blot (Unreduced) using CXCL10 / IP-10 Antibody Cat.-No AM20277PU-N



Western Blot (Reduced) using CXCL10 / IP-10 Antibody Cat.-No AM20277PU-N



Sandwich ELISA using CXCL10 / IP-10 Antibody
Cat.-No AM20277PU-N