

Product datasheet for **AM20265SU-N**

Prostate Specific Antigen (KLK3) (26-251) Mouse Monoclonal Antibody [Clone ID: 5A11E2]

Product data:

Product Type:	Primary Antibodies
Clone Name:	5A11E2
Applications:	ELISA, FC, IHC, WB
Recommended Dilution:	ELISA: 1/10000. Flow Cytometry: 1/200 - 1/400. Immunohistochemistry on Paraffin Sections: 1/200. Western Blot: 1/500 - 1/2000.
Reactivity:	Human
Host:	Mouse
Isotype:	IgG1
Clonality:	Monoclonal
Immunogen:	Purified truncated recombinant Human KLK3-His (aa 26-251) expressed in E. Coli strain BL21 (DE3)
Specificity:	This antibody recognizes Kallikrein 3/Prostate Specific Antigen (KLK3/PSA).
Formulation:	State: Ascites State: Ascites fluid containing 0.03% Sodium Azide
Concentration:	lot specific
Conjugation:	Unconjugated
Storage:	Store the antibody undiluted at 2-8°C for one month or (in aliquots) at -20°C for longer. Avoid repeated freezing and thawing.
Stability:	Shelf life: one year from despatch.
Gene Name:	kallikrein related peptidase 3
Database Link:	Entrez Gene 354 Human P07288



[View online »](#)

Background:

Kallikreins are a subgroup of serine proteases having diverse physiological functions. Growing evidence suggests that many kallikreins are implicated in carcinogenesis and some have potential as novel cancer and other disease biomarkers. This gene is one of the fifteen kallikrein subfamily members located in a cluster on chromosome 19. Its protein product is a protease present in seminal plasma. It is thought to function normally in the liquefaction of seminal coagulum, presumably by hydrolysis of the high molecular mass seminal vesicle protein. Serum level of this protein, called PSA in the clinical setting, is useful in the diagnosis and monitoring of prostatic carcinoma. Alternate splicing of this gene generates several transcript variants encoding different isoforms.

Synonyms:

Prostate-specific antigen, Semenogelase, Gamma-seminoprotein, P-30 antigen

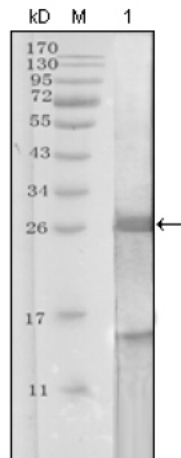
Protein Families:

Druggable Genome, Protease, Secreted Protein

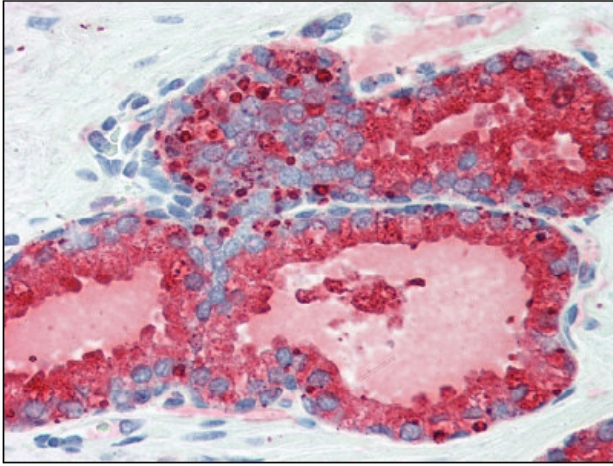
Protein Pathways:

Pathways in cancer, Prostate cancer

Product images:



Western blot analysis using KLK3 antibody (Clone 5A11E2) against KLK3-His recombinant protein (Lane 1)



AM20265SU-N KLK3 Antibody staining of Formalin-Fixed, Paraffin-Embedded Human Prostate followed by biotinylated anti-mouse IgG secondary antibody, Alkaline Phosphatase-streptavidin and chromogen.