

## Product datasheet for **AM20232PU-S**

### Alpha 3/4-monofucosylated polylectosaminoglycans Mouse Monoclonal Antibody [Clone ID: FW6]

#### Product data:

Product Type:	Primary Antibodies
Clone Name:	FW6
Applications:	ELISA, IF, IHC, WB
Recommended Dilution:	<b>ELISA.</b> <b>Western Blot (2)</b> <b>Immunocytochemistry (1).</b> <b>Immunohistochemistry on Paraffin Sections (1-3).</b>
Reactivity:	Human
Host:	Mouse
Isotype:	IgM
Clonality:	Monoclonal
Immunogen:	Purified mucus glycoproteins (Mucins) from Human amniotic fluid.
Specificity:	Alpha-3, 4-monofucosylated polylectosaminoglycans on Mucins, oncofetal antigen
Formulation:	PBS, pH 7.4 State: Purified State: Lyophilized purified Ig fraction
Reconstitution Method:	Restore in aqua bidest to 1 mg/ml
Purification:	Protein G Chromatography
Conjugation:	Unconjugated
Storage:	Store lyophilized at 2-8°C and reconstituted at -20°C. Avoid repeated freezing and thawing.
Stability:	Shelf life: One year from despatch.



[View online »](#)

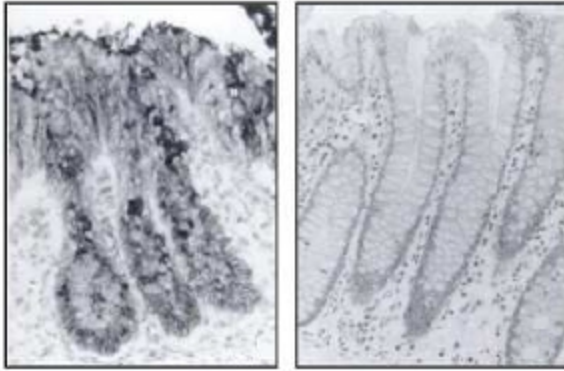
**Product images:**

Figure 1. Immunohistochemistry image of Mucins in Paraffin Sections of Human embryonic and adult colon mucosa. The sections were incubated with [AM20232PU-N]/M20232PU-S antibody and detected using a four-step immunoperoxidase technique. 3-Amino-9-ethylcarbaz