

Product datasheet for **AM20190SU-N**

CD30 (TNFRSF8) Mouse Monoclonal Antibody [Clone ID: Ber-H2]

Product data:

Product Type:	Primary Antibodies
Clone Name:	Ber-H2
Applications:	IHC, WB
Recommended Dilution:	Western Blot. Immunohistochemistry on Formalin-Fixed, Paraffin-Embedded Sections: 1/50-1/100 Pretreatment of deparaffinized tissue with heat-induced epitope retrieval is recommended. Use Polymer anti Mouse/Rabbit IgG as a detection system. <i>Positive Control:</i> Hodgkin's lymphoma or anaplastic large cell lymphoma.
Reactivity:	Human
Host:	Mouse
Isotype:	IgG1
Clonality:	Monoclonal
Immunogen:	Co cell line established from a patient with Hidgkin's disease of T-cell lineage.
Specificity:	This antibody reacts with CD30 antigen. Ber-H2 distinguishes large cell lymphomas derived from activated lymphoid cells from histiocytic malignancies and lymphomas derived from resting and precursor lymphoid cells or from anaplastic carcinomas. About one third of the Ki-1 positive lymphomas lack the leukocyte common antigen (CD45). Cellular Localization: Cell membrane and cytoplasmic.
Formulation:	State: Supernatant State: Liquid purified Tissue Culture Supernatant with 0.2% BSA and 15mM Sodium Azide.
Conjugation:	Unconjugated
Storage:	Store the antibody undiluted at 2-8°C.
Stability:	Shelf life: one year from despatch.
Gene Name:	tumor necrosis factor receptor superfamily member 8
Database Link:	Entrez Gene 9332 Human Entrez Gene 943 Human P28908



[View online »](#)

Background:

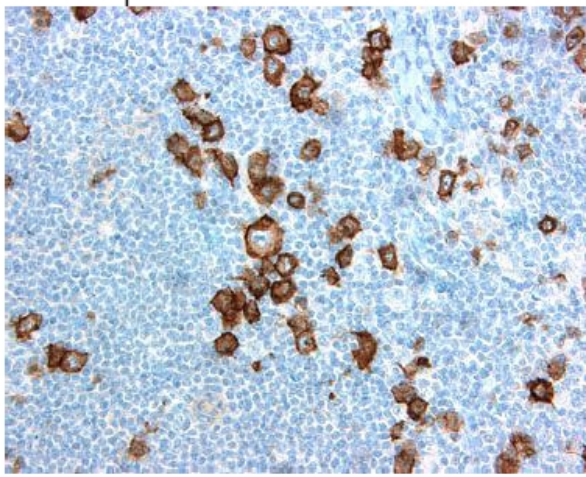
CD30, a single chain glycoprotein, is synthesized as a 90kDa precursor which is processed in the Golgi complex into a membrane-bound phosphorylated mature 105/120kDa glycoprotein. The CD30/Ki-1 antigen is expressed by mononuclear Hodgkin and multinucleated Reed-Sternberg cells in Hodgkin's disease, by the tumor cells of a majority of anaplastic large cell lymphomas, and by a varying proportion of activated T and B cells. B. Ber-H2 distinguishes large cell lymphomas derived from activated lymphoid cells from histiocytic malignancies and lymphomas derived from resting and precursor lymphoid cells or from anaplastic carcinomas. About one third of the Ki-1 positive lymphomas lack the leukocyte common antigen (CD45).

Synonyms:

TNFRSF8, D1S166E, CD30L receptor, KI-1 antigen

Protein Families:

Druggable Genome, Secreted Protein, Transmembrane

Product images:

Formalin-Fixed, Paraffin-Embedded Human Hodgkin's lymphoma stained with CD30 antibody Cat.-No. AM20190SU-N using peroxidase conjugate and DAB chromogen. Note the cytoplasmic staining of Hodgkin's cells.