

Product datasheet for **AM20110PU-N**

Factor H (CFH) Mouse Monoclonal Antibody [Clone ID: OX-24]

Product data:

Product Type:	Primary Antibodies
Clone Name:	OX-24
Applications:	ELISA, FC, IHC, IP, WB
Recommended Dilution:	ELISA. Flow Cytometry. Immunohistochemistry on Paraffin Sections: 20 µg/ml. Immunoprecipitation. Western Blot.
Reactivity:	Human
Host:	Mouse
Isotype:	IgG1
Clonality:	Monoclonal
Immunogen:	Purified Human complement factor H protein
Specificity:	Clone OX-24 inhibits the binding of factor H to surface bound C3. This antibody recognizes the Human serum complement protein factor H and a 43-49kD truncated form of factor H.
Formulation:	PBS containing 0.02% Sodium Azide as preservative. State: Purified State: Liquid purified Ig fraction
Concentration:	lot specific
Purification:	Protein G Chromatography.
Conjugation:	Unconjugated
Storage:	Store the antibody undiluted at 2-8°C for one month or (in aliquots) at -20°C for longer. Avoid repeated freezing and thawing.
Stability:	Shelf life: one year from despatch.
Gene Name:	complement factor H
Database Link:	Entrez Gene 3075 Human P08603



[View online »](#)

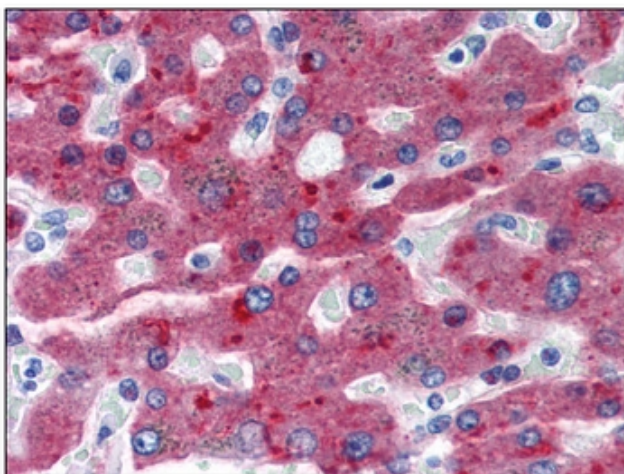
Background: Factor H (CFH) is a protein with twenty short consensus repeat (SCR) domains. Factor H is secreted into the bloodstream and has an essential role in the regulation of complement activation, restricting this innate defense mechanism to microbial infections. Mutations in Factor H have been associated with hemolytic-uremic syndrome (HUS) and chronic hypocomplementemic nephropathy. Alternate transcriptional splice variants, encoding different isoforms, have been characterized.

Synonyms: CFH, HF, HF1, HF2, H factor 1

Protein Families: Druggable Genome, Secreted Protein

Protein Pathways: Complement and coagulation cascades

Product images:



Immunohistochemistry: Factor H antibody staining of Formalin-Fixed, Paraffin-Embedded Human Liver followed by biotinylated secondary antibody, alkaline phosphatase-streptavidin and chromogen.