

## Product datasheet for **AM20017RP-N**

### GM CSF Receptor alpha (CSF2RA) Mouse Monoclonal Antibody [Clone ID: 4H1]

#### Product data:

Product Type:	Primary Antibodies
Clone Name:	4H1
Applications:	FC
Recommended Dilution:	<b>Flow Cytometry analysis</b> of Human blood cells using 10 µl reagent / 100 µl of whole blood or 10 <sup>6</sup> cells in a suspension. The content of a vial (1 ml) is sufficient for 100 tests.
Reactivity:	Human
Host:	Mouse
Isotype:	IgG1
Clonality:	Monoclonal
Immunogen:	CD116-transfected COS cells
Specificity:	This antibody recognizes Human CD116, the GM-CSF receptor alpha subunit (approx. 80 kDa) expressed e.g. by neutrophils, eosinophils, monocytes and macrophages.
Formulation:	Phosphate buffered saline (PBS) Label: PE State: Liquid purified Ig fraction Stabilizer: 0.2% (w/v) high-grade protease free BSA Preservative: 15 mM Sodium Azide Label: Conjugated with R-Phycoerythrin (PE) under optimum conditions
Purification:	The conjugate is purified by Size-Exclusion Chromatography and adjusted for direct use
Conjugation:	PE
Storage:	Store the antibody undiluted at 2-8°C. <b>DO NOT FREEZE!</b> This product is photosensitive and should be protected from light.
Stability:	Shelf life: one year from despatch.
Gene Name:	colony stimulating factor 2 receptor alpha subunit
Database Link:	<a href="#">Entrez Gene 1438 Human P15509</a>



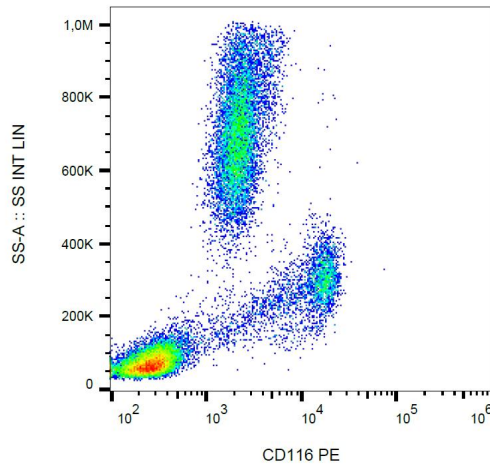
[View online »](#)

**Background:**

CD116 (GM-CSF R alpha) is the low affinity receptor for granulocyte-macrophage colony-stimulating factor (GM-CSF). CD116 heterodimerizes with CD131, the common beta chain subunit shared with IL-3 and IL5 receptors, to form the high affinity GM-CSF receptor. CD116 is expressed by myeloid cells including macrophages, neutrophils, eosinophils, dendritic cells, and their precursors, as well as on endothelial cells. It is being used as a specific marker of myeloid leukemias.

**Synonyms:**

GM-CSF-R-alpha, GMR, CSF2R, CSF2RY, GMCSF Receptor alpha, GM-CSF Receptor alpha

**Product images:**

Surface staining (flow cytometry) of human peripheral blood with anti-CD116 (4H1) PE.