

## Product datasheet for **AM12139PU-N**

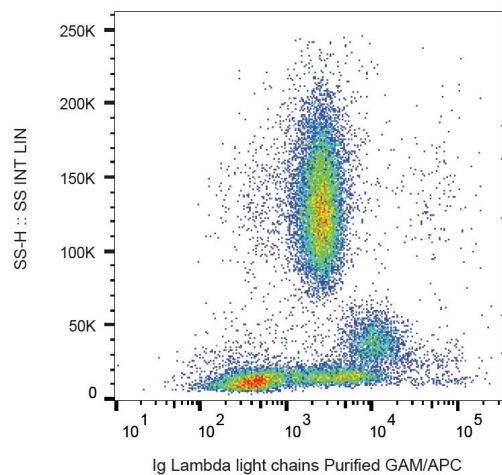
### Human Lambda Light Chain Mouse Monoclonal Antibody [Clone ID: 4C2]

#### Product data:

Product Type:	Primary Antibodies
Clone Name:	4C2
Applications:	ELISA, FC, IHC
Recommended Dilution:	Flow cytometry: 2-8 µg/ml. Positive control: RAMOS human cell line. Immunohistochemistry on frozen and paraffin sections. ELISA.
Reactivity:	Human
Host:	Mouse
Isotype:	IgG1
Clonality:	Monoclonal
Specificity:	This antibody reacts with lambda light chains (22.5 kDa) of human immunoglobulin.
Formulation:	Phosphate buffered saline (PBS) with 15 mM sodium azide, approx. pH 7.4 State: Aff - Purified State: Liquid Ig fraction
Concentration:	lot specific
Purification:	Protein A affinity chromatography (> 95% pure by SDS-PAGE)
Conjugation:	Unconjugated
Storage:	Store at 2 - 8 °C for up to one month or (in aliquots) at -20 °C for longer. Avoid repeated freezing and thawing.
Stability:	Shelf life: one year from despatch.
Background:	Immunoglobulin classes share the same basic four polypeptide chain structure of two heavy chains (five heavy chains types) and two light chains (kappa, lambda; both having a molecular weight of 22.5kDa). Kappa and lambda consist of a variable region and a constant region and can easily be differentiated by the antigenic properties of the constant region. The ratio of kappa to lambda is 70:30.



[View online »](#)

**Product images:**

Surface staining of human peripheral blood with anti-human lambda light chain (4C2) purified, GAM-APC.