

Product datasheet for **AM12137PU-N**

CCDC98 (FAM175A) (N-term) Mouse Monoclonal Antibody [Clone ID: ABRA1-01]

Product data:

Product Type:	Primary Antibodies
Clone Name:	ABRA1-01
Applications:	FC, IHC, IP, WB
Recommended Dilution:	Flow Cytometry: 1-2 µg/ml. Immunoprecipitation. Western blot (<i>Reducing Conditions</i>). This clone has been described to work in Immunohistochemistry on Paraffin Sections .
Reactivity:	Human
Host:	Mouse
Isotype:	IgG
Clonality:	Monoclonal
Immunogen:	Recombinant protein corresponding to amino acids 1-313 of ABRA1 with N-terminal His6 tag
Specificity:	This monoclonal antibody ABRA1-01 recognizes N-terminal part of ABRA1 (Abraxas, CCDC98), an adaptor protein involved in DNA repair, which migrates as a 45 kDa band on PAAGE under reducing conditions.
Formulation:	PBS, pH~7.4 State: Aff - Purified State: Liquid purified Ig fraction (> 95% by SDS-PAGE) Preservative: 15mM Sodium Azide
Concentration:	lot specific
Purification:	Affinity Chromatography on Protein A
Conjugation:	Unconjugated
Storage:	Store undiluted at 2-8°C for one month or (in aliquots) at -20°C for longer. Avoid repeated freezing and thawing.
Stability:	Shelf life: one year from despatch.
Gene Name:	family with sequence similarity 175 member A
Database Link:	Entrez Gene 84142 Human Q6UWZ7



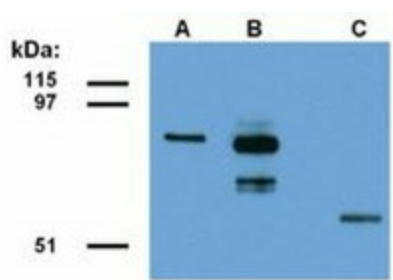
[View online »](#)

Background:

ABRA1 (Abraxas), also known as CCDC98, is an adaptor protein that is essential for formation and function of BRCA1 A tumor suppressor complex. This complex plays critical roles in DNA repair, cell cycle checkpoint control, and maintenance of genomic stability. ABRA1 mediates interaction of ubiquitin-interacting motif-containing protein RAP80 and deubiquitination enzyme BRCC36 with BRCA1/BARD1. ABRA1 controls both DNA-damage-induced formation of BRCA1 foci and BRCA1-dependent G2/M checkpoint activation.

Synonyms:

Protein FAM175A, ABRA1, Abraxas

Product images:

Detection of ABRA1-EGFP fusion protein in lysate of transfected HEK293 cells. Lane A: Immunostaining with anti-ABRA1 (clone ABRA1-01) Lane B: Immunostaining with anti-EGFP (polyclonal) Lane C: Immunostaining with anti-alpha tubulin (clone TU-01)