

Product datasheet for **AM12136PU-N**

G protein alpha inhibitor 1 (GNAI1) Mouse Monoclonal Antibody [Clone ID: R4.5]

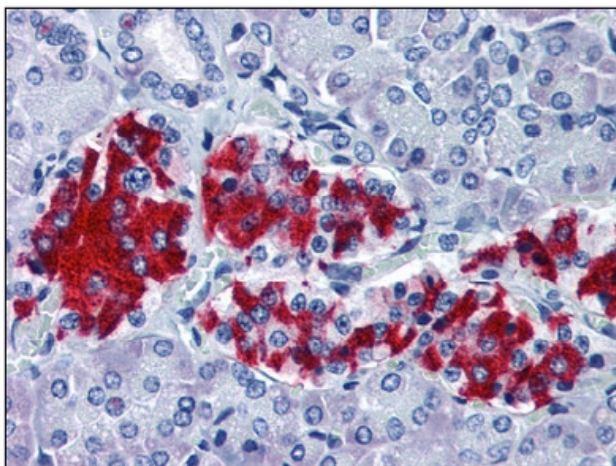
Product data:

| | |
|-----------------------|---------------------------------------------------------------------------------------------------------------------------------------------------------------------------------------------|
| Product Type: | Primary Antibodies |
| Clone Name: | R4.5 |
| Applications: | IHC, WB |
| Recommended Dilution: | Immunohistochemistry on Paraffin Sections: 1/50. Western Blot. |
| Reactivity: | Bovine, Guinea Pig, Human, Mouse, Rat |
| Host: | Mouse |
| Isotype: | IgG2b |
| Clonality: | Monoclonal |
| Immunogen: | Partially purified Gai1 protein from Rat brain (39-42kD). |
| Specificity: | Recognizes Gai1. Does not cross-react with Transducin, Gao, Gai2, Gai3, or Gas. ADP-ribosylation of ai1 proteins does not alter the reactivity. Cellular Localization: Cell membrane. |
| Formulation: | PBS, pH 7.4 State: Purified State: Liquid purified IgG fraction Stabilizer: 0.2% BSA Preservative: 0.09% Sodium Azide |
| Concentration: | lot specific |
| Purification: | Protein A Chromatography |
| Conjugation: | Unconjugated |
| Storage: | Store undiluted at 2-8°C for one month or (Add 40-50% Glycerol) at -20°C for longer. Avoid repeated freezing and thawing. |
| Stability: | Shelf life: one year from despatch. |
| Gene Name: | G protein subunit alpha i1 |
| Database Link: | Entrez Gene 14677 Mouse Entrez Gene 25686 Rat Entrez Gene 2770 Human P63096 |



[View online »](#)

| | |
|--------------------------|-----------------------------------------------------------------------------------------------------------------------------------------------------------------------------------------------------------------------------------------------------------------------------------------------------------------------------------------------------------------------------------------------------------------------------------------------------------------------|
| Background: | GTP binding proteins (G proteins) play a critical role in signal transduction by coupling receptors to effectors. The intracellular consequences of G protein activation include second messenger generation, protein phosphorylation, ion channel activation, gene induction, cell growth, and differentiation. Gi belongs to the pertussis toxin sensitive G proteins. Gi consists of three different subtypes of alpha subunits (alpha i1, alpha i2 and alpha i3). |
| Synonyms: | GNAI1 |
| Protein Families: | Druggable Genome |
| Protein Pathways: | Axon guidance, Chemokine signaling pathway, Gap junction, Leukocyte transendothelial migration, Long-term depression, Melanogenesis, Progesterone-mediated oocyte maturation, Tight junction |

Product images:

Pancreas: Formalin-Fixed, Paraffin-Embedded (FFPE)