

## Product datasheet for **AM12133PU-N**

### Adenosine Receptor A2a (ADORA2A) (full length) Mouse Monoclonal Antibody [Clone ID: 7F6-G5-A2 / 7F6]

#### Product data:

Product Type:	Primary Antibodies
Clone Name:	7F6-G5-A2 / 7F6
Applications:	FC, IHC, WB
Recommended Dilution:	<b>Flow Cytometry.</b> <b>Immunohistochemistry on Paraffin Sections:</b> 5 µg/ml. <b>IHC-Pfa:</b> 1 µg/ml. <b>Western Blot:</b> 1/1000.
Reactivity:	Canine, Guinea Pig, Human, Mouse, Rabbit, Rat
Host:	Mouse
Isotype:	IgG2a
Clonality:	Monoclonal
Immunogen:	6His-tagged full-length Human recombinant A2A receptor. <b>Epitope:</b> 3rd Intracellular Domain (SQPLPGER)
Specificity:	This antibody recognizes Human Adenosine Receptor A2A at ~43 kDa. <b>Does not</b> recognize Adenosine Receptor A2A in knockout mice.
Formulation:	0.01M Tris-Glycine, pH 7.4, 0.15M Sodium Chloride State: Purified State: Liquid purified IgG fraction Preservative: 0.05% Sodium Azide
Concentration:	lot specific
Purification:	Protein G Chromatography
Conjugation:	Unconjugated
Storage:	Store undiluted at 2-8°C for one month or (in aliquots) at -20°C for longer. Avoid repeated freezing and thawing.
Stability:	Shelf life: one year from despatch.
Gene Name:	adenosine A2a receptor



[View online »](#)

**Database Link:** [Entrez Gene 11540 Mouse](#)[Entrez Gene 25369 Rat](#)[Entrez Gene 135 Human P29274](#)

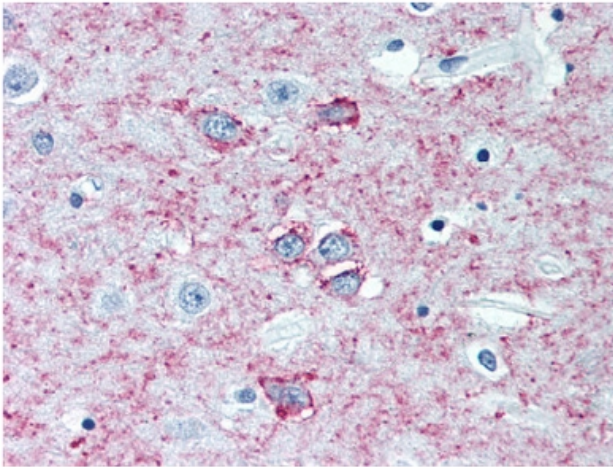
**Background:** The A2a Adenosine Receptor is a major target of caffeine. This receptor inhibits cell aggregation, induces vasodilation, and downregulates inflammation. This gene encodes a protein which is one of several receptor subtypes for adenosine. The activity of the encoded protein, a G protein coupled receptor family member, is mediated by G proteins which activate adenylyl cyclase. The encoded protein is abundant in basal ganglia, vasculature and platelets and it is a major target of caffeine.

**Synonyms:** ADORA2A, ADORA2

**Protein Families:** Druggable Genome, GPCR, Transmembrane

**Protein Pathways:** Calcium signaling pathway, Neuroactive ligand-receptor interaction, Vascular smooth muscle contraction

### Product images:



ADORA2A antibody staining of Formalin-Fixed Paraffin-Embedded Human Brain, Putamen at 5 ug/ml followed by Biotin conjugated anti-Mouse IgG secondary antibody, Alkaline Phosphatase-Streptavidin and Chromogen.