

## Product datasheet for **AM12129RP-N**

### PDGF Receptor beta (PDGFRB) Mouse Monoclonal Antibody [Clone ID: 18A2]

#### Product data:

Product Type:	Primary Antibodies
Clone Name:	18A2
Applications:	FC
Recommended Dilution:	<b>Flow Cytometry analysis</b> of human blood cells using 20 µl reagent / 100 µl of whole blood or 10e6 cells in a suspension. The content of a vial (2 ml) is sufficient for 100 tests.
Reactivity:	Human
Host:	Mouse
Isotype:	IgG1
Clonality:	Monoclonal
Immunogen:	CD140b-transfected NIH 3T3 cells
Specificity:	This antibody recognizes CD140b / PDGF-RB, the 180-190 kDa beta chain of platelet-derived growth factor receptor, which is widely expressed on a variety of mesenchymal-derived cells and plays pro-proliferative roles.
Formulation:	Phosphate buffered saline (PBS) solution containing 15mM sodium azide Label: PE State: Liquid purified Ig fraction Label: Conjugated with R-Phycoerythrin under optimum conditions. The conjugate is purified by size-exclusion chromatography and adjusted for direct use.
Conjugation:	PE
Storage:	Store the antibody at 2 - 8 °C. DO NOT FREEZE! This product is photosensitive and should be protected from light.
Stability:	Shelf life: one year from despatch.
Gene Name:	platelet derived growth factor receptor beta
Database Link:	<a href="#">Entrez Gene 5159 Human P09619</a>



[View online »](#)

**Background:**

CD140b / PDGF-RB (platelet-derived growth factor receptor beta) is a cell surface receptor for members of platelet-derived growth factor family, whose intracellular part contains a tyrosine kinase domain. CD140b forms homodimers, or heterodimerizes with CD140a / PDGF-RA. Whereas CD140a can have both pro-proliferative or anti-proliferative effects, the CD140b induces in various cell types their proliferation and migration. CD140b has also developmental roles in the cardiovascular system and is preferentially expressed on some tumours such as medulloblastoma.

**Synonyms:**

PDGF-R-beta, PDGF Receptor beta

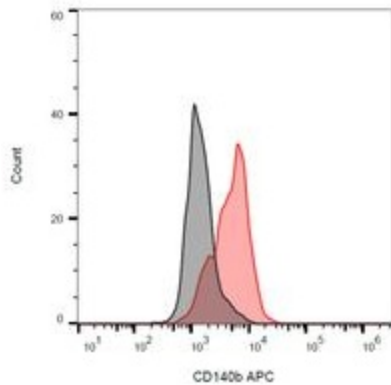
**Protein Families:**

Druggable Genome, ES Cell Differentiation/IPS, Protein Kinase, Transmembrane

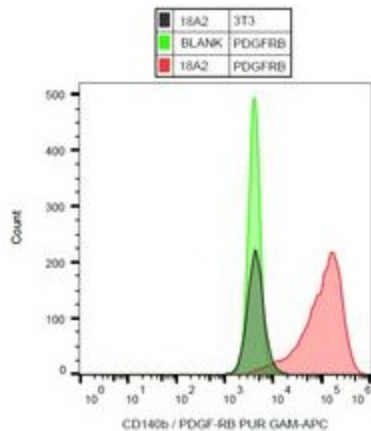
**Protein Pathways:**

Calcium signaling pathway, Colorectal cancer, Cytokine-cytokine receptor interaction, Focal adhesion, Gap junction, Glioma, MAPK signaling pathway, Melanoma, Pathways in cancer, Prostate cancer, Regulation of actin cytoskeleton

**Product images:**



Surface staining of CD140b / PDGF-RB in human CD140b / PDGF-RB stable transfectants with anti-CD140b (18A2) APC.



Surface staining of CD140b / PDGF-RB in human CD140b / PDGF-RB stable transfectants with anti-CD140b (18A2) purified GAM-APC.