

## Product datasheet for **AM12124PU-N**

### **Pyy (3-36) Mouse Monoclonal Antibody [Clone ID: RPY-B12]**

#### **Product data:**

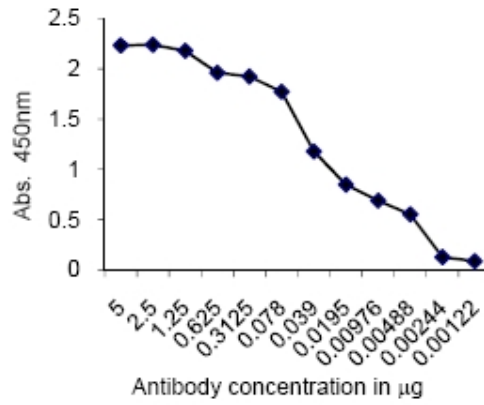
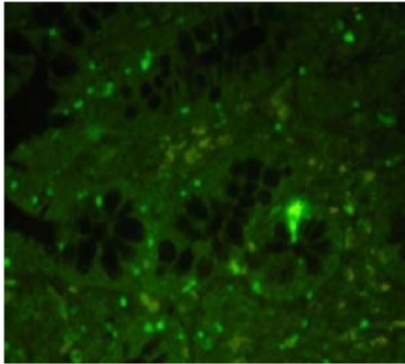
Product Type:	Primary Antibodies
Clone Name:	RPY-B12
Applications:	ELISA, IF
Recommended Dilution:	<b>Indirect ELISA:</b> Use at 1-2 µg/ml (For detection of antigen). <b>Immunofluorescence:</b> Use at 20-40 µg/ml.
Reactivity:	Rat
Host:	Mouse
Isotype:	IgG1
Clonality:	Monoclonal
Immunogen:	Synthetic peptide (full length, 34 amino acids).
Specificity:	This antibody recognizes PYY3-36.
Formulation:	PBS containing containing 30% Glycerol, 0.5% BSA and 0.01% Thimerosal. State: Aff - Purified State: Liquid purified Ig fraction.
Concentration:	lot specific
Purification:	Affinity Chromatography on Protein G.
Conjugation:	Unconjugated
Storage:	Store the antibody (in aliquots) at -20°C Avoid repeated freezing and thawing.
Stability:	Shelf life: one year from despatch.
Gene Name:	peptide YY (mapped)
Database Link:	<a href="#">Entrez Gene 287730 Rat P10631</a>
Background:	Peptide YY (PYY), a member of a neuropeptide Y (NPY family) is a 36 AA peptide secreted from the L cells of the gastrointestinal tract in response to food intake. The release of PYY is stimulated by nutrients within the lower small intestine and the colon, which in turn decreases food intake by inhibiting gut motility. It acts as an "ileal brake" to cause a sense of satiety. PYY3-36 is produced by the dipeptidyl peptidase-IV digestion of polypeptide YY (PYY).



[View online »](#)

**Synonyms:** Peptide tyrosine tyrosine, PYY-I, Peptide YY(3-36), PYY-II

**Product images:**



Immunofluorescence of Rat Colon Tissue (Left): Antigen retrieval was done with Tris-EDTA, pH 9.0 in pressure cooker. Endocrine cells from the mucosal layer of colon labeled by the antibody display optimum cytoplasmic staining. Indirect ELISA (Right): Serial dilution of the antibody starting with 5  $\mu\text{g}/\text{well}$  was done to check for the affinity. 0.5  $\mu\text{g}$  of coated antigen can be sensitively detected by anti-Rat PYY3-36 antibody used at 3 ng/well.