

Product datasheet for **AM12122PU-N**

IRS1 pSer616 Mouse Monoclonal Antibody [Clone ID: HIR-B1]

Product data:

Product Type:	Primary Antibodies
Clone Name:	HIR-B1
Applications:	ELISA, WB
Recommended Dilution:	Indirect ELISA: Use at 2 µg/ml (For detection of antigen). Western Blot.
Reactivity:	Human
Host:	Mouse
Isotype:	IgG1
Clonality:	Monoclonal
Immunogen:	Synthetic peptide phosphorylated at Ser616 site.
Specificity:	This antibody does not recognize IRS peptide Not phosphorylated at Ser616 and will not recognize IRS peptide phosphorylated at Tyr183. Also does not react with Riboflavin carrier protein which is known to have multiple phosphate groups.
Formulation:	PBS containing containing 30% Glycerol, 0.5% BSA and 0.01% Thimerosal. State: Aff - Purified State: Liquid purified Ig fraction.
Concentration:	lot specific
Purification:	Affinity Chromatography on Protein G.
Conjugation:	Unconjugated
Storage:	Store the antibody (in aliquots) at -20°C Avoid repeated freezing and thawing.
Stability:	Shelf life: one year from despatch.
Gene Name:	insulin receptor substrate 1
Database Link:	Entrez Gene 3667 Human P35568



[View online »](#)

Background:

Insulin receptor substrates (IRS) subtypes are responsible for several insulin related activities, such as glucose homeostasis, cell growth, cell transformation, apoptosis and insulin signal transduction. The balance between Ser/Thr phosphorylation of IRS has been demonstrated to be an important regulator of insulin signaling. IRS1 has also been shown to be constitutively activated in cancers such as breast cancer, Wilm's tumors, and adrenal cortical carcinomas.

Synonyms:

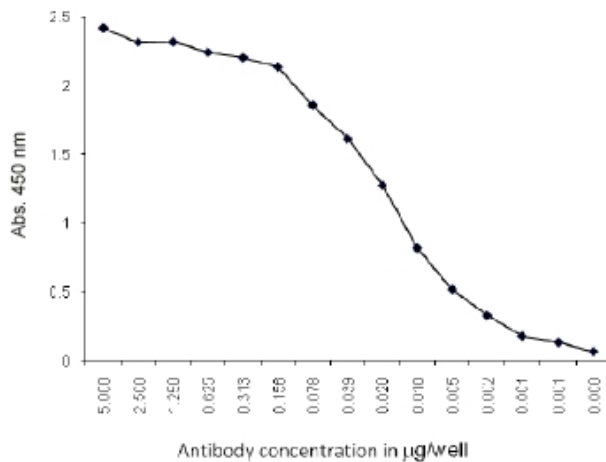
Insulin receptor substrate 1, IRS-1

Protein Families:

Druggable Genome

Protein Pathways:

Adipocytokine signaling pathway, Insulin signaling pathway, Neurotrophin signaling pathway, Type II diabetes mellitus

Product images:

Indirect ELISA: Serial dilution of the antibody starting with 5 µg/well was done to check for the affinity. 1 µg of coated antigen can be sensitively detected by anti-Human IRS pSer616 antibody used at 300 pg/well concentration.