

Product datasheet for **AM12068PE-N**

PDGF Receptor alpha (PDGFRA) Mouse Monoclonal Antibody [Clone ID: 16A1]

Product data:

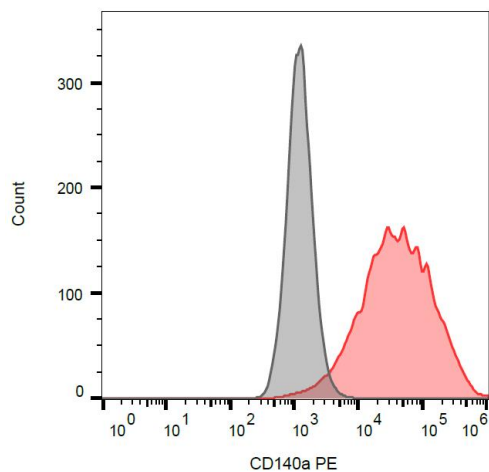
Product Type:	Primary Antibodies
Clone Name:	16A1
Applications:	FC
Reactivity:	Human
Host:	Mouse
Isotype:	IgG1
Clonality:	Monoclonal
Immunogen:	CD140a-transfected NIH 3T3 cells
Specificity:	The antibody recognizes CD140a / PDGF-RA, the 170 kDa alpha chain of platelet-derived growth factor receptor, which is widely expressed on a variety of mesenchymal-derived cells and plays pro-proliferative or anti-proliferative roles in various tumours.
Formulation:	Label: PE State: Liquid Ig fraction Label: Conjugated to Phycoerythrin
Conjugation:	PE
Storage:	Store the antibody at 2 - 8 °C. DO NOT FREEZE! This product is photosensitive and should be protected from light.
Stability:	Shelf life: one year from despatch.
Gene Name:	platelet derived growth factor receptor alpha
Database Link:	Entrez Gene 5156 Human P16234
Background:	CD140a / PDGF-RA (platelet-derived growth factor receptor alpha) is a cell surface receptor for members of platelet-derived growth factor family, whose intracellular part contains a tyrosine kinase domain. CD140a forms homodimers, or heterodimerizes with CD140b / PDGF-RB. Whereas CD140b induces in different cell types their proliferation and migration, the role of CD140a is more controversial, with pro-proliferative or anti-proliferative effects. CD140a has early developmental functions, mediates mesodermal cell migration, and later acts in signaling associated in epithelial-mesenchymal interactions.



[View online »](#)

Synonyms:	PDGF-R-alpha, PDGF Receptor alpha
Protein Families:	Druggable Genome, ES Cell Differentiation/IPS, Protein Kinase, Transmembrane
Protein Pathways:	Calcium signaling pathway, Colorectal cancer, Cytokine-cytokine receptor interaction, Endocytosis, Focal adhesion, Gap junction, Glioma, MAPK signaling pathway, Melanoma, Pathways in cancer, Prostate cancer, Regulation of actin cytoskeleton

Product images:



Surface staining of CD140a in CD140a-transfected cells using anti-CD140a (16A1) PE.