

## Product datasheet for **AM12068AC-N**

### PDGF Receptor alpha (PDGFRA) Mouse Monoclonal Antibody [Clone ID: 16A1]

#### Product data:

Product Type:	Primary Antibodies
Clone Name:	16A1
Applications:	FC
Recommended Dilution:	<b>Flow Cytometry:</b> 10 µl reagent / 100 µl of whole blood or 10e6 cells in a suspension. The content of a vial (1 ml) is sufficient for 100 Tests.
Reactivity:	Human
Host:	Mouse
Isotype:	IgG1
Clonality:	Monoclonal
Immunogen:	CD140a-transfected NIH 3T3 cells
Specificity:	This Mouse monoclonal antibody 16A1 recognizes CD140a / PDGF-RA, the 170 kDa alpha chain of platelet-derived growth factor receptor, which is widely expressed on a variety of mesenchymal-derived cells and plays pro-proliferative or anti-proliferative roles in various tumours.
Formulation:	PBS Label: APC State: Liquid purified Ig fraction Stabilizer: 0.2% (w/v) high-grade BSA (Protease free) Preservative: 15 mM Sodium Azide Label: Allophycocyanin
Purification:	Size-Exclusion Chromatography
Conjugation:	APC
Storage:	Store the antibody undiluted at 2-8°C. <b>DO NOT FREEZE!</b> This product is photosensitive and should be protected from light.
Stability:	Shelf life: one year from despatch.
Gene Name:	platelet derived growth factor receptor alpha



[View online »](#)

**Database Link:** [Entrez Gene 5156 Human P16234](#)

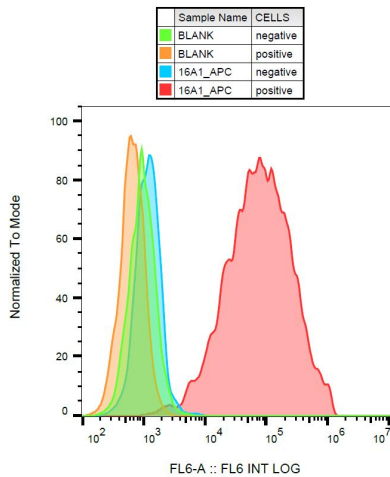
**Background:** CD140a / PDGF-RA (platelet-derived growth factor receptor alpha) is a cell surface receptor for members of platelet-derived growth factor family, whose intracellular part contains a tyrosine kinase domain. CD140a forms homodimers, or heterodimerizes with CD140b / PDGF-RB. Whereas CD140b induces in different cell types their proliferation and migration, the role of CD140a is more controversial, with pro-proliferative or anti-proliferative effects. CD140a has early developmental functions, mediates mesodermal cell migration, and later acts in signaling associated in epithelial-mesenchymal interactions.

**Synonyms:** PDGF-R-alpha, PDGF Receptor alpha

**Protein Families:** Druggable Genome, ES Cell Differentiation/IPS, Protein Kinase, Transmembrane

**Protein Pathways:** Calcium signaling pathway, Colorectal cancer, Cytokine-cytokine receptor interaction, Endocytosis, Focal adhesion, Gap junction, Glioma, MAPK signaling pathway, Melanoma, Pathways in cancer, Prostate cancer, Regulation of actin cytoskeleton

**Product images:**



Surface staining of CD140a in CD140a-transfected 3T3 cells using anti-CD140a (16A1) APC.