

## Product datasheet for **AM12066PU-N**

### CD62L (SELL) Mouse Monoclonal Antibody [Clone ID: DREG56]

#### Product data:

Product Type:	Primary Antibodies
Clone Name:	DREG56
Applications:	FC, FN, IHC, IP, WB
Recommended Dilution:	<b>Flow Cytometry:</b> 2 µg/ml. <b>Immunoprecipitation.</b> <b>Western blot</b> (Non-Reducing Conditions). <b>Immunohistochemistry on Frozen Sections.</b> <b>Functional Application:</b> Particularly effective in blocking of lymphocyte CD62L-mediated binding to peripheral lymph node HEV.
Reactivity:	Human
Host:	Mouse
Isotype:	IgG1
Clonality:	Monoclonal
Immunogen:	PMA-activated human peripheral blood leukocytes
Specificity:	This antibody recognizes CD62L / L-selectin, a 65-76 kDa cell surface protein, expressed by neutrophils, monocytes, and subsets of T, B, and NK cells, that interacts with specific carbohydrates exposed on activated endothelial cells.
Formulation:	Phosphate buffered saline (PBS), pH~7.4 with 15 mM Sodium Azide as preservative State: Purified State: Liquid purified Ig fraction (> 95% by SDS-PAGE)
Concentration:	lot specific
Purification:	Protein A Affinity Chromatography
Conjugation:	Unconjugated
Storage:	Store undiluted at 2-8°C. <b>DO NOT FREEZE!</b>
Stability:	Shelf life: one year from despatch.
Gene Name:	selectin L



[View online »](#)

**Database Link:** [Entrez Gene 6402 Human P14151](#)

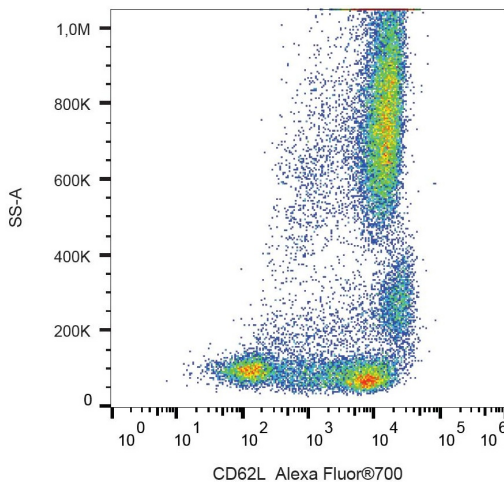
**Background:** CD62L (L-selectin) is an adhesion glycoprotein that is constitutively expressed on the cell surface of leukocytes and mediates their homing to inflammatory sites and peripheral lymph nodes by enabling rolling along the venular wall. CD62L is also involved in activation-induced neutrophil aggregation. Activation-dependent CD62L shedding, however, counteracts neutrophil rolling. CD62L has also signaling roles including enhance of chemokine receptor expression. Similarly to CD62P, the major ligand of CD62L is PSGL-1 (P-selectin glycoprotein ligand-1). The level of CD62L expression can be used to help distinguish naive T cells from effector/memory T cells.

**Synonyms:** SELL, LNHR, LYAM1, Leu-8, TQ1, gp90-MEL, LECAM1, LAM-1

**Protein Families:** Druggable Genome, ES Cell Differentiation/IPS, Transmembrane

**Protein Pathways:** Cell adhesion molecules (CAMs)

### Product images:



Surface staining of CD62L in human peripheral blood with anti-CD62L (DREG56) Alexa Fluor 700.