

## Product datasheet for **AM12064PU-N**

### CD11a / ITGAL Rat Monoclonal Antibody [Clone ID: M17/4]

#### Product data:

|                       |   |
|-----------------------|---|
| Product Type:         | Primary Antibodies  |
| Clone Name:           | M17/4   |
| Applications:         | FC, FN, IHC, IP   |
| Recommended Dilution: | <b>Flow Cytometry:</b> 1 µg/ml.<br><b>Immunoprecipitation.</b><br><b>Immunohistochemistry on Frozen Sections</b> (Acetone fixation).<br><i>Positive Control:</i> Mouse spleen or thymus.<br><b>Functional Assays:</b> Blocking. |
| Reactivity:           | Mouse   |
| Host:                 | Rat   |
| Isotype:              | IgG2a   |
| Clonality:            | Monoclonal  |
| Immunogen:            | C57BL/6 mouse splenic secondary cytotoxic T lymphocytes   |
| Specificity:          | The antibody reacts with CD11a (alpha-subunit of murine LFA-1), a 180 kDa type I transmembrane glycoprotein expressed on B and T lymphocytes, monocytes, macrophages, neutrophils, basophils and eosinophils.                   |
| Formulation:          | PBS, pH~7.4<br>State: Aff - Purified<br>State: Liquid purified Ig fraction (> 95% by SDS-PAGE)<br>Preservative: 15 mM Sodium Azide  |
| Concentration:        | lot specific  |
| Purification:         | Purified by protein-G affinity chromatography.  |
| Conjugation:          | Unconjugated  |
| Storage:              | Store undiluted at 2-8°C.<br><b>DO NOT FREEZE!</b>  |
| Stability:            | Shelf life: one year from despatch.   |
| Database Link:        | <a href="#">P24063</a>  |



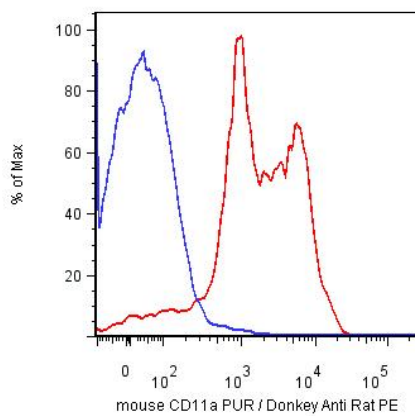
[View online »](#)

**Background:**

CD11a (LFA-1 alpha) together with CD18 constitute leukocyte function-associated antigen 1 (LFA-1), the alphaLbeta2 integrin. CD11a is implicated in activation of LFA-1 complex. LFA-1 is expressed on the plasma membrane of leukocytes in a low-affinity conformation. Cell stimulation by chemokines or other signals leads to induction the high-affinity conformation, which supports tight binding of LFA-1 to its ligands, the intercellular adhesion molecules ICAM-1, -2, -3. LFA-1 is thus involved in interaction of various immune cells and in their tissue-specific settlement, but participates also in control of cell differentiation and proliferation and of T-cell effector functions.

**Synonyms:**

Integrin alpha-L, LFA1, LFA-1

**Product images:**

Surface staining of murine splenocytes using anti-CD11a monoclonal antibody (cloneM17/4) purified.