

Product datasheet for **AM12064FC-N**

CD11a / ITGAL Rat Monoclonal Antibody [Clone ID: M17/4]

Product data:

Product Type:	Primary Antibodies
Clone Name:	M17/4
Applications:	FC
Recommended Dilution:	Flow Cytometry: 3 µg/ml.
Reactivity:	Mouse
Host:	Rat
Isotype:	IgG2a
Clonality:	Monoclonal
Immunogen:	C57BL/6 mouse splenic secondary cytotoxic T lymphocytes
Specificity:	The rat monoclonal antibody M17/4 reacts with CD11a (alpha-subunit of murine LFA-1), a 180 kDa type I transmembrane glycoprotein expressed on B and T lymphocytes, monocytes, macrophages, neutrophils, basophils and eosinophils.
Formulation:	Phosphate buffered saline (PBS) with 15 mM sodium azide, approx. pH 7.4 Label: FITC State: Liquid purified Ig fraction Label: Conjugated with Fluorescein isothiocyanate (FITC) under optimum conditions. The reagent is free of unconjugated FITC.
Concentration:	lot specific
Conjugation:	FITC
Storage:	Store the antibody at 2 - 8 °C. DO NOT FREEZE! This product is photosensitive and should be protected from light.
Stability:	Shelf life: one year from despatch.
Database Link:	P24063



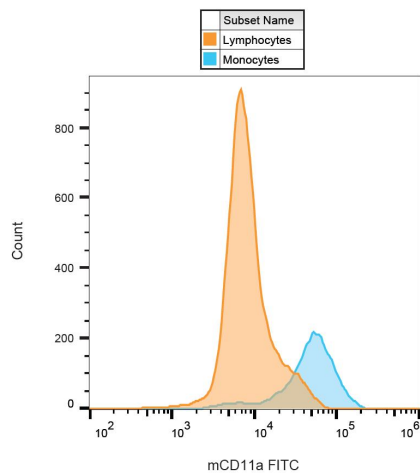
[View online »](#)

Background:

CD11a (LFA-1 alpha) together with CD18 constitute leukocyte function-associated antigen 1 (LFA-1), the alphaLbeta2 integrin. CD11a is implicated in activation of LFA-1 complex. LFA-1 is expressed on the plasma membrane of leukocytes in a low-affinity conformation. Cell stimulation by chemokines or other signals leads to induction the high-affinity conformation, which supports tight binding of LFA-1 to its ligands, the intercellular adhesion molecules ICAM-1, -2, -3. LFA-1 is thus involved in interaction of various immune cells and in their tissue-specific settlement, but participates also in control of cell differentiation and proliferation and of T-cell effector functions.

Synonyms:

Integrin alpha-L, LFA1, LFA-1

Product images:

Surface staining of murine monocytes using anti-CD11a monoclonal antibody (cloneM17/4) FITC.