

## Product datasheet for **AM12006FC-N**

### CD28 Mouse Monoclonal Antibody [Clone ID: CD28.2]

#### Product data:

Product Type:	Primary Antibodies
Clone Name:	CD28.2
Applications:	FC
Recommended Dilution:	<b>Flow cytometry analysis</b> of human blood cells using 20 µl reagent / 100 µl of whole blood or 10 <sup>6</sup> cells in a suspension. The content of a vial (2 ml) is sufficient for 100 tests.
Reactivity:	Human, Primate
Host:	Mouse
Isotype:	IgG1
Clonality:	Monoclonal
Immunogen:	DC28.1.3.3 murine T cell hybridoma transfected with human CD28 cDNA
Specificity:	The antibody CD28.2 reacts with CD28, a disulfide-linked homodimeric type I glycoprotein (monomer of Mw 44 kDa) which is a critical costimulatory receptor of T cells.
Formulation:	Phosphate buffered saline (PBS) solution containing 15mM sodium azide Label: FITC State: Liquid purified Ig fraction Label: Conjugated with Fluorescein isothiocyanate under optimum conditions. The reagent is free of unconjugated and adjusted for direct use.
Conjugation:	FITC
Storage:	Store the antibody at 2 - 8 °C. DO NOT FREEZE! This product is photosensitive and should be protected from light.
Stability:	Shelf life: one year from despatch.
Gene Name:	CD28 molecule
Database Link:	<a href="#">Entrez Gene 940 Human P10747</a>



[View online »](#)

**Background:**

CD28 is the critical T cell costimulatory receptor which provides to the cell the important second activation signal by binding CD80 and CD86 that are expressed by antigen presenting cells. Besides its costimulation role CD28 functions in preventing T cells from anergic hyporesponsive state or from undergoing premature apoptotic cell death. CD28 is also expressed on human fetal NK cells and some NK cell lines, whereas on murine NK cells the CD28 expression is much broader.

**Synonyms:**

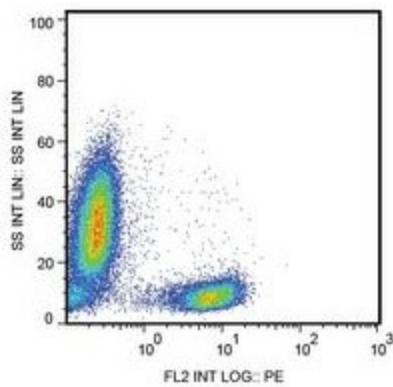
TP44

**Protein Families:**

Druggable Genome, Transmembrane

**Protein Pathways:**

Allograft rejection, Autoimmune thyroid disease, Cell adhesion molecules (CAMs), Graft-versus-host disease, Systemic lupus erythematosus, T cell receptor signaling pathway, Type I diabetes mellitus, Viral myocarditis

**Product images:**


Surface staining of human peripheral blood leukocytes with anti-human CD28 (CD28.2) purified