

## Product datasheet for **AM12003FC-N**

### ENPP3 Mouse Monoclonal Antibody [Clone ID: NP4D6]

#### Product data:

Product Type:	Primary Antibodies
Clone Name:	NP4D6
Applications:	FC, IF
Recommended Dilution:	<b>Flow Cytometry analysis</b> of human blood cells using 4 µl reagent / 100 µl of whole blood or 10 <sup>6</sup> cells in a suspension. The content of a vial (0.4 ml) is sufficient for 100 tests.
Reactivity:	Human
Host:	Mouse
Isotype:	IgG1
Clonality:	Monoclonal
Immunogen:	HEK-293 cells transfected with human CD203c
Specificity:	This antibody reacts with CD203c, a transmembrane ectoenzyme expressed on basophils and mast cells, and overexpressed upon their activation.
Formulation:	Phosphate buffered saline (PBS) Label: FITC State: Liquid Ig fraction Stabilizer: 0.2% (w/v) high-grade protease free Bovine Serum Albumin (BSA) Preservative: 15 mM sodium azide
Conjugation:	FITC
Storage:	Store the antibody at 2-8°C. <b>DO NOT FREEZE!</b> This product is photosensitive and should be protected from light.
Stability:	Shelf life: one year from despatch.
Gene Name:	ectonucleotide pyrophosphatase/phosphodiesterase 3
Database Link:	<a href="#">Entrez Gene 5169 Human O14638</a>



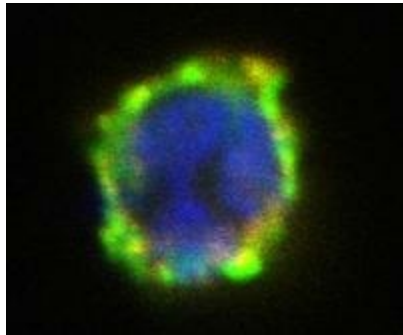
[View online »](#)

**Background:**

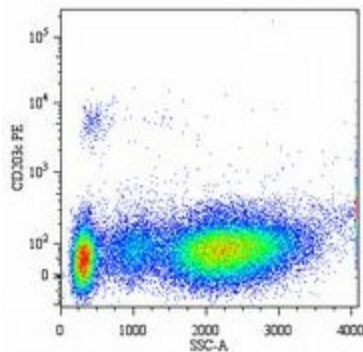
CD203c, also known as ENPP-3, is integral membrane ectoenzyme (ectonucleotide pyrophosphatase/phosphodiesterase 3), that hydrolyses nucleotide triphosphates and thus modulates purinergic signaling. CD203c is expressed mainly on activated basophils and mast cells. CD203c is upregulated in response to IgE-receptor cross-linking and is overexpressed on neoplastic mast cells in patients with systemic mastocytosis. Measurement of its induced enhancement on the plasma membrane is useful for diagnostics of allergies.

**Synonyms:**

E-NPP 3, PDNP3, Phosphodiesterase I beta, PD-I beta

**Product images:**

Surface staining of activated human basophil by FITC-conjugated anti-CD63 (clone MEM-259, green) and PE-conjugated anti-CD203c (clone NP4D6, red); merged signal yellow. DNA visualized by DAPI (blue).



Surface staining of human basophils in allergen-stimulated whole blood (CD203c<sup>pos</sup>/SSC<sup>low</sup>) by anti-CD203c antibody (NP4D6).