

## Product datasheet for **AM12002RP-N**

### CD162 (SELPLG) Mouse Monoclonal Antibody [Clone ID: TC2]

#### Product data:

Product Type:	Primary Antibodies
Clone Name:	TC2
Applications:	FC
Recommended Dilution:	<b>Flow Cytometry:</b> 20 µl reagent / 100 µl of whole blood or 10 <sup>6</sup> cells in a suspension. The content of a vial (2 ml) is sufficient for 100 tests.
Reactivity:	Human
Host:	Mouse
Isotype:	IgG1
Clonality:	Monoclonal
Immunogen:	Human thymocytes
Specificity:	This antibody reacts with CD162, a 220 kDa type I integral membrane protein expressed as disulfide-linked homodimer (sialomucin family). CD162 is present on the most peripheral blood T lymphocytes, monocytes, granulocytes; it is also expressed on a subpopulation of B lymphocytes and CD34 <sup>+</sup> bone marrow cells.
Formulation:	Phosphate buffered saline (PBS) Label: PE State: Liquid purified Ig fraction Stabilizer: 0.2% (w/v) high-grade protease free BSA Preservative: 15 mM Sodium Azide Label: Conjugated with R-Phycoerythrin under optimum conditions.
Purification:	Size-Exclusion Chromatography
Conjugation:	PE
Storage:	Store undiluted at 2-8°C. DO NOT FREEZE! This product is photosensitive and should be protected from light.
Stability:	Shelf life: one year from despatch.
Gene Name:	selectin P ligand



[View online »](#)

Database Link: [Entrez Gene 6404 Human Q14242](#)

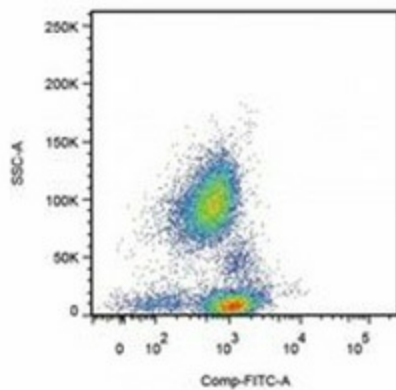
**Background:** CD162 (P-selectin glycoprotein ligand-1, PSGL-1) is a sialomucin constitutively expressed as a disulfide-linked homodimer of two 120 kDa subunits on the surface of circulating leukocytes. CD162 serves as a ligand for P- E- and L-selectin, with the highest affinity for P-selectin. It is thus involved in leukocyte rolling at the endothelial surfaces, prerequisite for firm leukocyte adhesion and subsequent transendothelial migration. CD162 also mediates leukocyte-platelet adhesion and interleukocyte contacts. Whereas serving as an adhesion molecule on mature leukocytes, CD162 is a potent negative regulator of human hematopoietic progenitors.

**Synonyms:** PSGL-1, Selectin P ligand, SELPLG

**Protein Families:** Druggable Genome, Transmembrane

**Protein Pathways:** Cell adhesion molecules (CAMs)

### Product images:



Surface staining of human peripheral blood cells with anti-human CD162 (clone TC2).