

Product datasheet for **AM12002FC-N**

CD162 (SELPLG) Mouse Monoclonal Antibody [Clone ID: TC2]

Product data:

Product Type:	Primary Antibodies
Clone Name:	TC2
Applications:	FC
Recommended Dilution:	Flow Cytometry analysis of Human blood cells using 20 µl reagent / 100 ml of whole blood or 10e6 cells in a suspension. The content of a vial (2 ml) is sufficient for 100 tests.
Reactivity:	Human
Host:	Mouse
Isotype:	IgG1
Clonality:	Monoclonal
Immunogen:	Human thymocytes
Specificity:	The antibody TC2 reacts with CD162, a 220 kDa type I integral membrane protein expressed as disulfide-linked homodimer (sialomucin family). CD162 is present on the most peripheral blood T lymphocytes, monocytes, granulocytes; it is also expressed on a subpopulation of B lymphocytes and CD34+ bone marrow cells.
Formulation:	Phosphate buffered saline (PBS) containing 15 mM Sodium Azide and 0.2% (w/v) high-grade protease free BSA as a stabilizing agent Label: FITC State: Liquid purified Ig fraction Label: Fluorescein isothiocyanate ; free of unconjugated
Conjugation:	FITC
Storage:	Store the antibody at 2-8 °C. DO NOT FREEZE! This product is photosensitive and should be protected from light.
Stability:	Shelf life: one year from despatch.
Gene Name:	selectin P ligand
Database Link:	Entrez Gene 6404 Human Q14242



[View online »](#)

Background:

CD162 (P-selectin glycoprotein ligand-1, PSGL-1) is a sialomucin constitutively expressed as a disulfide-linked homodimer of two 120 kDa subunits on the surface of circulating leukocytes. CD162 serves as a ligand for P- E- and L-selectin, with the highest affinity for P-selectin. It is thus involved in leukocyte rolling at the endothelial surfaces, prerequisite for firm leukocyte adhesion and subsequent transendothelial migration. CD162 also mediates leukocyte-platelet adhesion and interleukocyte contacts. Whereas serving as an adhesion molecule on mature leukocytes, CD162 is a potent negative regulator of human hematopoietic progenitors.

Synonyms:

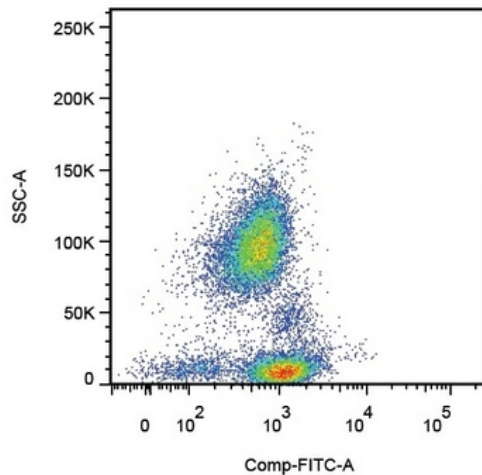
PSGL-1, Selectin P ligand, SELPLG

Protein Families:

Druggable Genome, Transmembrane

Protein Pathways:

Cell adhesion molecules (CAMs)

Product images:

Surface staining of human peripheral blood cells with anti-Human CD162 antibody (clone TC2).