

Product datasheet for **AM12002AC-N**

CD162 (SELPLG) Mouse Monoclonal Antibody [Clone ID: TC2]

Product data:

| | |
|-----------------------|--|
| Product Type: | Primary Antibodies |
| Clone Name: | TC2 |
| Applications: | FC |
| Recommended Dilution: | The reagent is designed for Flow Cytometry analysis of human blood cells using 10 µl reagent / 100 µl of whole blood or 10e6 cells in a suspension. The content of a vial (1 ml) is sufficient for 100 tests. |
| Reactivity: | Human |
| Host: | Mouse |
| Isotype: | IgG1 |
| Clonality: | Monoclonal |
| Immunogen: | Human thymocytes |
| Specificity: | This antibody reacts with CD162, a 220 kDa type I integral membrane protein expressed as disulfide-linked homodimer (sialomucin family). CD162 is present on the most peripheral blood T lymphocytes, monocytes, granulocytes; it is also expressed on a subpopulation of B lymphocytes and CD34+ bone marrow cells. |
| Formulation: | PBS containing 15 mM Sodium Azide as preservative and 0.2% (w/v) high-grade protease free BSA as a stabilizing agent. Label: APC State: Liquid purified Ig fraction Label: Conjugated to Allophycocyanin |
| Purification: | Size-Exclusion Chromatography |
| Conjugation: | APC |
| Storage: | Store the antibody undiluted at 2-8°C. DO NOT FREEZE! This product is photosensitive and should be protected from light. |
| Stability: | Shelf life: one year from despatch. |
| Gene Name: | selectin P ligand |



[View online »](#)

Database Link: [Entrez Gene 6404 Human Q14242](#)

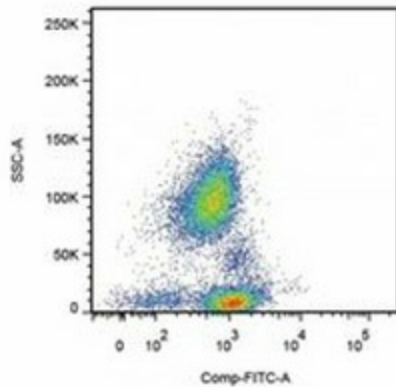
Background: CD162 (P-selectin glycoprotein ligand-1, PSGL-1) is a sialomucin constitutively expressed as a disulfide-linked homodimer of two 120 kDa subunits on the surface of circulating leukocytes. CD162 serves as a ligand for P- E- and L-selectin, with the highest affinity for P-selectin. It is thus involved in leukocyte rolling at the endothelial surfaces, prerequisite for firm leukocyte adhesion and subsequent transendothelial migration. CD162 also mediates leukocyte-platelet adhesion and interleukocyte contacts. Whereas serving as an adhesion molecule on mature leukocytes, CD162 is a potent negative regulator of human hematopoietic progenitors.

Synonyms: PSGL-1, Selectin P ligand, SELPLG

Protein Families: Druggable Genome, Transmembrane

Protein Pathways: Cell adhesion molecules (CAMs)

Product images:



Surface staining of human peripheral blood cells with anti-human CD162 (clone TC2).