

Product datasheet for **AM11078PU-N**

IKK beta (IKBKB) Mouse Monoclonal Antibody [Clone ID: 62AT216]

Product data:

Product Type:	Primary Antibodies
Clone Name:	62AT216
Applications:	WB
Recommended Dilution:	ELISA: 1/1,000. Western blotting: 1/100-1/500.
Reactivity:	Human
Host:	Mouse
Isotype:	IgG1
Clonality:	Monoclonal
Immunogen:	This antibody was raised using purified His-tagged recombinant full length human IKK beta.
Specificity:	This antibody is specific to IKK beta.
Formulation:	PBS containing 0.09% (W/V) Sodium Azide as preservative. State: Purified State: Liquid purified Ig fraction.
Concentration:	lot specific
Purification:	Protein G Chromatography eluted with high and low pH buffers and neutralized immediately, followed by dialysis against PBS.
Conjugation:	Unconjugated
Storage:	Store the antibody undiluted at 2-8°C for one month or (in aliquots) at -20°C for longer. Avoid repeated freezing and thawing.
Stability:	Shelf life: one year from despatch.
Gene Name:	inhibitor of kappa light polypeptide gene enhancer in B-cells, kinase beta
Database Link:	Entrez Gene 3551 Human O14920
Background:	IKK beta is a member of the serine/threonine protein kinase family. The encoded protein, a component of a cytokine-activated protein complex that is an inhibitor of the essential transcription factor NF-kappa-B complex, phosphorylates sites that trigger the degradation of the inhibitor via the ubiquitination pathway, thereby activating the transcription factor.



[View online »](#)

Synonyms: I-kappa-B-kinase beta, IKK-beta, IKK-B, I-kappa-B kinase 2, IKK2, NFKBIKB

Product images:

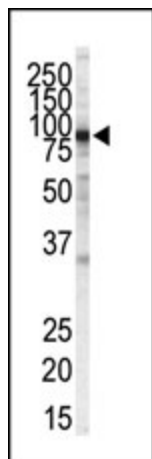


Figure 1. Western blot using anti-IKKbeta Mab to detect IKKbeta in Jurkat cell lysate.