

## Product datasheet for **AM11048PU-N**

### Lin28 (LIN28A) Mouse Monoclonal Antibody [Clone ID: 55CT58.12.1]

#### Product data:

Product Type:	Primary Antibodies
Clone Name:	55CT58.12.1
Applications:	IHC, WB
Recommended Dilution:	ELISA: 1/10000. Western blotting: 1/200-1/2000. Immunohistochemistry: 1/50-1/200.
Reactivity:	Human
Host:	Mouse
Isotype:	IgG1
Clonality:	Monoclonal
Immunogen:	LIN28A recombinant protein is used to produce this monoclonal antibody.
Specificity:	This antibody is specific to LIN28A.
Formulation:	PBS containing 0.09% (W/V) Sodium Azide as preservative. State: Purified State: Liquid purified Ig fraction.
Concentration:	lot specific
Purification:	Protein G Chromatography eluted with high and low pH buffers and neutralized immediately, followed by dialysis against PBS.
Conjugation:	Unconjugated
Storage:	Store the antibody undiluted at 2-8°C for one month or (in aliquots) at -20°C for longer. Avoid repeated freezing and thawing.
Stability:	Shelf life: one year from despatch.
Gene Name:	lin-28 homolog A
Database Link:	<a href="#">Entrez Gene 79727 Human Q9H9Z2</a>



[View online »](#)

**Background:**

LIN28A acts as a 'translational enhancer', driving specific mRNAs to polysomes and thus increasing the efficiency of protein synthesis. Its association with the translational machinery and target mRNAs results in an increased number of initiation events per molecule of mRNA and, indirectly, in stabilizing the mRNAs. Binds IGF2 mRNA, MYOD1 mRNA, ARBP/36B4 ribosomal protein mRNA and its own mRNA. It is essential for skeletal muscle differentiation through the translational up-regulation of IGF2 expression.

**Synonyms:**

LIN-28, LIN28A, CSDD1, ZCCHC1

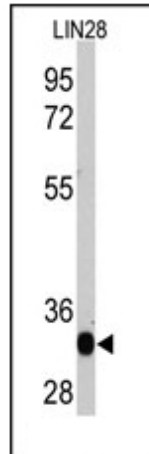
**Product images:**

Figure 1. Western blot analysis of LIN28 recombinant protein by anti-LIN28A Monoclonal Antibody. LIN28 (arrow) was detected using the purified Mab.

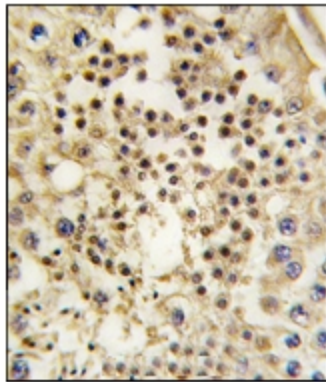


Figure 2. Formalin-fixed and paraffin-embedded human testis tissue reacted with LIN28A Monoclonal Antibody, which was peroxidase-conjugated to the secondary antibody, followed by DAB staining. This data demonstrates the use of this antibody for immunohistochemistry. Clinical relevance has not been evaluated.