

Product datasheet for **AM11031SU-N**

CRMP2 (DPYSL2) Mouse Monoclonal Antibody [Clone ID: 33CT11.40.3]

Product data:

Product Type:	Primary Antibodies
Clone Name:	33CT11.40.3
Applications:	IHC, WB
Recommended Dilution:	ELISA: 1/1,000. Western blotting: 1/500-1/1000. Immunohistochemistry on Paraffin Sections: 1/200.
Reactivity:	Human
Host:	Mouse
Isotype:	IgG2b
Clonality:	Monoclonal
Immunogen:	Purified recombinant DHP fusion protein.
Specificity:	This antibody is specific to DRP-2.
Formulation:	State: Ascites State: Ascites containing 0.09% (W/V) Sodium Azide as preservative.
Conjugation:	Unconjugated
Storage:	Store the antibody undiluted at 2-8°C for one month or (in aliquots) at -20°C for longer. Avoid repeated freezing and thawing.
Stability:	Shelf life: one year from despatch.
Gene Name:	dihydropyrimidinase like 2
Database Link:	Entrez Gene 1808 Human Q16555



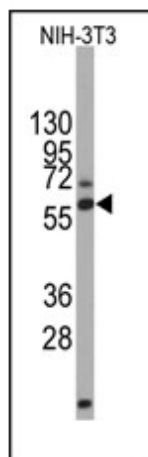
[View online »](#)

Background:

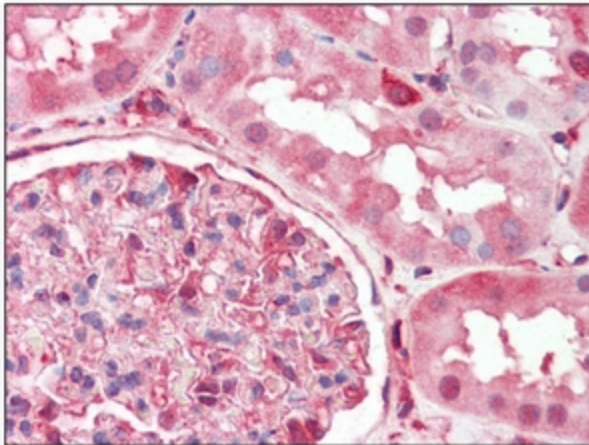
DRP-2, also known as collapsin response mediator protein-2 (CRMP-2), is expressed at high levels in the developing nervous system and plays a critical role in axonal outgrowth by specifying axon/dendrite fate and establishing neuronal polarity (1,2). CRMP-2 enhances axon elongation and branching by binding to tubulin heterodimers to promote microtubule assembly (3). GSK-3 β inactivates CRMP-2 by phosphorylating it at Thr514. CRMP-2 is primed following phosphorylation at Ser522 by CDK5 and at Thr518 by GSK-3 β (2). Phosphorylation of CRMP-2, which decreases tubulin binding ability, can be inhibited by NT-3 and BDNF through the PI3 kinase/Akt pathway (2). CRMP-2 also mediates semaphorin-induced growth cone collapse (4). Hyperphosphorylation of CRMP-2 and is found in Alzheimer disease plaques with concurrent elevated GSK-3 β activity in these patients (5).

Synonyms:

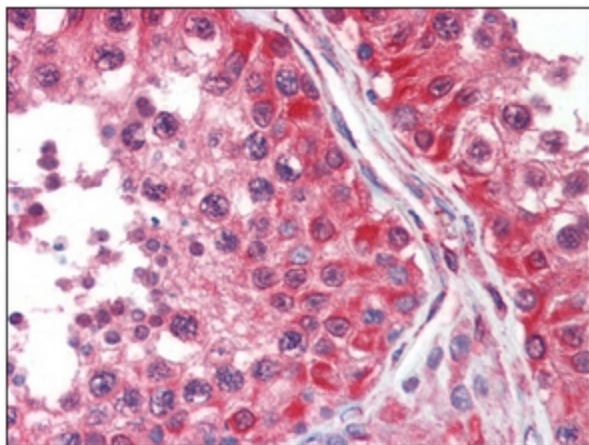
Dihydropyrimidinase-related protein 2, DRP-2, N2A3

Product images:


Western blot analysis of anti-DHP Monoclonal Antibody (Cat.#AM11031SU-N) by NIH-3T3 cell line lysates. DHP protein (arrow) was detected using the ascites Mab.



Immunohistochemistry: AM11031SU-N DPYSL2 antibody staining of Formalin-Fixed, Paraffin-Embedded Human kidney followed by biotinylated secondary antibody, alkaline phosphatase-streptavidin and chromogen.



Immunohistochemistry: AM11031SU-N DPYSL2 antibody staining of Formalin-Fixed, Paraffin-Embedded Human Testis followed by biotinylated secondary antibody, alkaline phosphatase-streptavidin and chromogen.