

Product datasheet for **AM11026SU-N**

Galectin 1 (LGALS1) Mouse Monoclonal Antibody [Clone ID: 24CT661.4.4]

Product data:

Product Type:	Primary Antibodies
Clone Name:	24CT661.4.4
Applications:	WB
Recommended Dilution:	ELISA: 1/1,000. Western blotting: 1/1000.
Reactivity:	Human
Host:	Mouse
Isotype:	IgG1
Clonality:	Monoclonal
Immunogen:	Purified His-tagged GLT protein.
Specificity:	This antibody is specific to GLT.
Formulation:	State: Ascites State: Ascites containing 0.09% (W/V) Sodium Azide as preservative.
Conjugation:	Unconjugated
Storage:	Store the antibody undiluted at 2-8°C for one month or (in aliquots) at -20°C for longer. Avoid repeated freezing and thawing.
Stability:	Shelf life: one year from despatch.
Gene Name:	galectin 1
Database Link:	Entrez Gene 3956 Human P09382
Background:	The galectins are a family of beta-galactoside-binding proteins implicated in modulating cell-cell and cell-matrix interactions. /gkt (LGALS1) may act as an autocrine negative growth factor that regulates cell proliferation.
Synonyms:	LGALS1, Galectin1, Lectin galactoside-binding soluble 1, Beta-galactoside-binding lectin L-14-I, Lactose-binding lectin 1, S-Lac lectin 1, Galaptin, 14 kDa lectin, HPL, HBL, MAPK-activating protein PM12



[View online »](#)

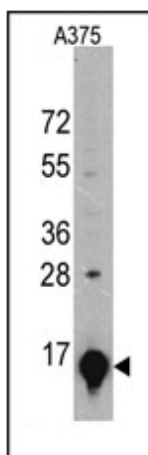
Product images:

Figure 1. Western blot analysis of GLT Monoclonal Antibody (Cat. #AM11026SU-N) in A375 cell line lysates. GLT (arrow) was detected using the ascites Mab. (dilution 1/1000).