

Product datasheet for **AM11023PU-N**

Fxyd1 Mouse Monoclonal Antibody [Clone ID: 41AT858.235]

Product data:

Product Type:	Primary Antibodies
Clone Name:	41AT858.235
Applications:	WB
Recommended Dilution:	ELISA: 1:1,000 Western blotting: 1/100-1/500.
Reactivity:	Mouse
Host:	Mouse
Isotype:	IgG1
Clonality:	Monoclonal
Immunogen:	This monoclonal antibody is generated from mice immunized with a KLH conjugated synthetic phosphopeptide corresponding to amino acid residues surrounding Ser68 of mouse PLM.
Specificity:	This antibody is specific to PLM at Ser68.
Formulation:	PBS containing 0.09% (W/V) Sodium Azide as preservative. State: Purified State: Liquid purified Ig fraction.
Concentration:	lot specific
Purification:	Protein G Chromatography eluted with high and low pH buffers and neutralized immediately, followed by dialysis against PBS.
Conjugation:	Unconjugated
Storage:	Store the antibody undiluted at 2-8°C for one month or (in aliquots) at -20°C for longer. Avoid repeated freezing and thawing.
Stability:	Shelf life: one year from despatch.
Gene Name:	FXVD domain-containing ion transport regulator 1
Database Link:	Entrez Gene 56188 Mouse Q9Z239



[View online »](#)

Background:

PLM (FXYP1) is a member of a family of small membrane proteins that share a 35-amino acid signature sequence domain, beginning with the sequence PFXYP and containing 7 invariant and 6 highly conserved amino acids. FXYP2, also known as the gamma subunit of the Na,K-ATPase, regulates the properties of that enzyme. FXYP1 (phospholemman), FXYP2 (gamma), FXYP3 (MAT-8), FXYP4 (CHIF), and FXYP5 (RIC) have been shown to induce channel activity in experimental expression systems. PLM may be phosphorylated by several kinases, including protein kinase A, protein kinase C, NIMA kinase, and myotonic dystrophy kinase. It is thought to form an ion channel or regulate ion channel activity.

Synonyms:

FXYP1, PLM

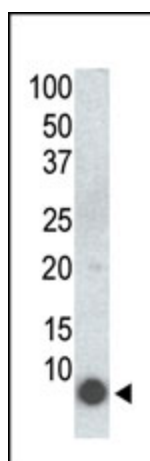
Product images:

Figure 1. Western blot analysis of anti-PLM Mab in 293 cells transfected with a plasmid encoding PLM.