

## Product datasheet for **AM11017PU-N**

### Bad pSer155/118 Mouse Monoclonal Antibody [Clone ID: 27AT381]

#### Product data:

Product Type:	Primary Antibodies
Clone Name:	27AT381
Applications:	WB
Recommended Dilution:	ELISA: 1/1,000. Western blotting1: 1/100-1/500.
Reactivity:	Human, Mouse
Host:	Mouse
Isotype:	IgG1
Clonality:	Monoclonal
Immunogen:	This monoclonal antibody is generated from mice immunized with a KLH conjugated synthetic peptide corresponding to sequences in Ser155 region of mouse Bad and residue Ser155 is phosphorylated.
Specificity:	This antibody is specific to mBad pSer155.
Formulation:	PBS containing 0.09% (W/V) Sodium Azide as preservative. State: Purified State: Liquid purified Ig fraction.
Concentration:	lot specific
Purification:	Protein G Chromatography eluted with high and low pH buffers and neutralized immediately, followed by dialysis against PBS.
Conjugation:	Unconjugated
Storage:	Store the antibody undiluted at 2-8°C for one month or (in aliquots) at -20°C for longer. Avoid repeated freezing and thawing.
Stability:	Shelf life: one year from despatch.
Gene Name:	BCL2-associated agonist of cell death
Database Link:	<a href="#">Entrez Gene 12015 Mouse Q61337</a>



[View online »](#)

**Background:**

Apoptosis is a critical aspect of cellular function and is implicated in a broad range of human diseases, from cancer to neurodegenerative and cardiovascular diseases. Intrafamilial Bcl-2 protein contacts are thought to regulate key aspects of apoptosis. The corruption of apoptotic instructions is associated with a large subset of human diseases, ranging from cancer and cardiovascular disease to neurodegenerative diseases, and name just a few. Understanding regulation of apoptosis is necessary to constructing a strategy for pharmaceutical intervention. The BH3 domain of Bcl-2 family members has been identified as key to the Bcl-2 regulatory function, although details are not fully elucidated.

**Synonyms:**

BAD, BBC6, BCL2L8, Bcl-2-like protein 8, Bcl2-L-8

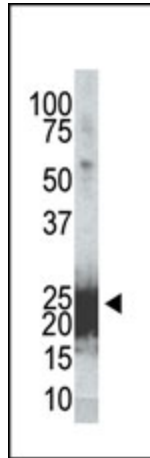
**Product images:**

Figure 1. Western analysis of cell extracts from 293 cells transfected with Flag-Bad, using Phospho-mBad-Ser155 Antibody.