

## Product datasheet for **AM11010SU-N**

### GFP Mouse Monoclonal Antibody [Clone ID: 168AT1211.269.64]

#### Product data:

Product Type:	Primary Antibodies
Clone Name:	168AT1211.269.64
Applications:	WB
Recommended Dilution:	<b>Western Blot:</b> 1/100-1/500.
Host:	Mouse
Isotype:	IgG
Clonality:	Monoclonal
Immunogen:	Purified His-tagged GFP protein was used to produced this monoclonal antibody.
Specificity:	Recognizes GFP Tag.
Formulation:	State: Ascites State: Liquid Ascites Preservative: 0.09% (W/V) Sodium Azide
Concentration:	Crude ascites
Conjugation:	Unconjugated
Storage:	Store undiluted at 2-8°C for one month or (in aliquots) at -20°C for longer. Avoid repeated freezing and thawing.
Stability:	Shelf life: one year from despatch.
Database Link:	<a href="#">P42212</a>



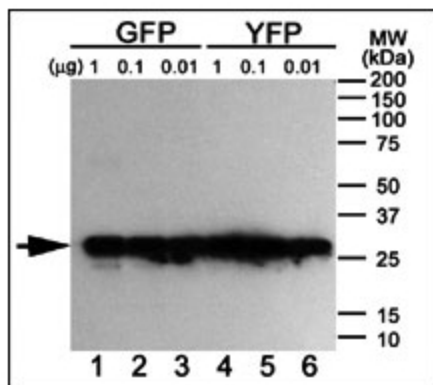
[View online »](#)

**Background:**

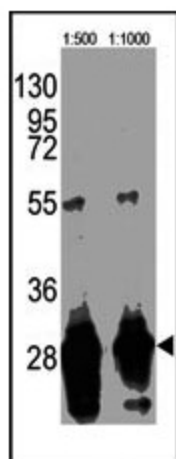
Green fluorescent protein (GFP), originally isolated from the jellyfish *Aequorea victoria*, is one of the best visual reporters for monitoring gene expression *in vivo* and *in situ*. GFP is also a convenient marker for use in flow cytometry because it eliminates the need to incubate with a secondary reagent (such as dyes or antibodies) for detection. However, anti-GFP antibody is also widely used for co-immunoprecipitation, co-localization or western blotting for the confirmation of specificity when a GFP fusion protein is expressed in cells. This monoclonal antibody provides a simple solution to detect the expression of a GFP-tagged protein in cells. Because of its ability to spontaneously generate its own fluorophore, the green fluorescent protein (GFP) from the jellyfish *Aequorea victoria* is used extensively as a fluorescent marker in molecular and cell biology. The yellow fluorescent proteins (YFPs) have the longest wavelength emissions of all GFP variants examined to date. This shift in the spectrum is the result of a T203Y substitution (single-letter amino acid code), a mutation rationally designed on the basis of the X-ray structure of GFP S65T. Anti-GFP monoclonal antibody can detect both GFP and YFP but not BFP (Blue fluorescent protein) by western blotting.

**Synonyms:**

Green fluorescent protein, GFP-Tag

**Product images:**

Western blot analysis of anti-GFP Tag Antibody Cat.-No AM11010SU-N (Clone CA071114E) using purified GFP, YFP and BFP proteins expressed in bacteria: Both GFP (Lanes 1-3) and YFP (Lanes 4-6) but not BFP (data not shown) were detected using the purified Mab.



Western blot analysis of anti-GFP Tag Antibody Cat.-No AM11010SU-N (Clone CA071114E) in GFP recombinant protein. GFP recombinant protein (arrow) was detected using the purified Mab.