

## Product datasheet for **AM11008SU-N**

### HA Epitope Tag (YPYDVPDYA) Mouse Monoclonal Antibody [Clone ID: 12CA5]

#### Product data:

Product Type:	Primary Antibodies
Clone Name:	12CA5
Applications:	WB
Recommended Dilution:	<b>ELISA:</b> 1/1,000. <b>Western blotting:</b> 1/1,000. <b>CHIP</b> (See Ref.1). <b>Immunoprecipitation</b> (See Ref.2).
Host:	Mouse
Isotype:	IgG2b
Clonality:	Monoclonal
Immunogen:	KLH conjugated synthetic peptide encoding HA tag (YPYDVPDYA) was used as antigen.
Specificity:	This monoclonal antibody (Clone 12CA5) provides a simple solution to detect the expression of an HA-tagged protein in cells.
Formulation:	State: Ascites State: Liquid Preservative: 0.09% (W/V) Sodium Azide
Concentration:	lot specific
Purification:	Protein G column, followed by dialysis against PBS
Conjugation:	Unconjugated
Storage:	Store undiluted at 2-8°C for one month or (in aliquots) at -20°C for longer. Avoid repeated freezing and thawing.
Stability:	Shelf life: one year from despatch.
Background:	Epitope tags consisting of short sequences recognized by well-characterized Monoclonal Antibodies have been widely used in the study of protein expression in various systems. The HA tag (YPYDVPDYA) and Myc Tag (AEEQKLISEEDLLRKRREQLKHKLE), recognized by monoclonal antibody clones 12CA5 and 9E10, respectively, are illustrative examples.



[View online »](#)

## Product images:

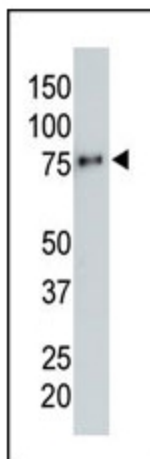


Figure 1. HA-tagged recombinant protein was expressed in COS7 cells. 15 g of cell lysate was loaded onto a gel to test the HA tag antibody (AM11008SU-N).

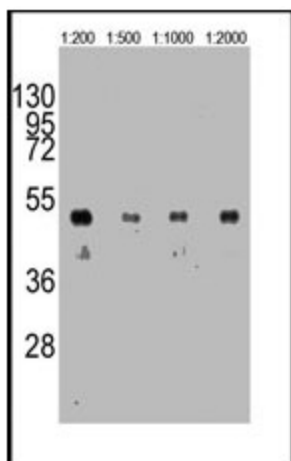


Figure 2. Western blot analysis of anti-HA Tag Antibody in 12tag recombinant protein. 12tag recombinant protein was detected using the purified Mab.